

# ONXAB2

AIR BARRIER WITH TEMPERED WINDOW GLASS



## TECHNICAL DATA

### MECHANICAL

Dimensions (ØxL): 154x21mm (6x0.8in)

Male input 1/2" GAS

Flange with 32 holes

System pressure: 6bar max

Recommended minimum pressure: 2bar

Example of application:

- Input air pressure 1bar, output air pressure 0.2bar, air flow rate 28m<sup>3</sup>/h
- Input air pressure 2bar, output air pressure 1bar, air flow rate 40m<sup>3</sup>/h
- Input air pressure 3bar, output air pressure 1.2bar, air flow rate 48m<sup>3</sup>/h
- Input air pressure 4bar, output air pressure 1.2bar, air flow rate 56m<sup>3</sup>/h
- Input air pressure 5bar, output air pressure 1.2bar, air flow rate 70m<sup>3</sup>/h
- Input air pressure 6bar, output air pressure 1.2bar, air flow rate 80m<sup>3</sup>/h

Tempered extra clear glass

- Thick: 6mm (0.24in)
- Operating temperature: 260°C (500°F) max, thermal gradient 108°C (226.4°F) max

Unit weight: 1.6kg (3.5lb)

## DESCRIPTION

Flange designed to create an air barrier in front of the glass, preventing the formation of dust deposits. It is supplied standard on NXW housing and optional NXM housing.

## PART NUMBER

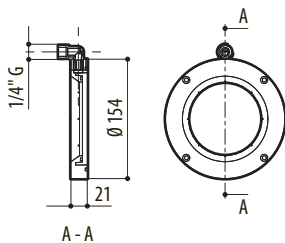
ONXAB2 Front flange with air barrier and tempered glass

## PACKAGE

Model Number	Weight	Dimensions (WxHxL)	Master carton
ONXAB1025B	1.8kg (4lb)	14x25.5x20cm (5.5x10x7.9in)	-

## TECHNICAL DRAWINGS

The indicated measurements are expressed in millimetres.



ONXAB2