



### TECHNICAL DATA

#### MECHANICAL

Dimensions (ØxL): 154x27mm

Male input 1/2" GAS

Flange with 32 holes

System pressure: 6bar max

Recommended minimum pressure: 2bar

Example of application:

- Input air pressure 1bar, output air pressure 0.2bar, air flow rate 28m<sup>3</sup>/h
- Input air pressure 2bar, output air pressure 1bar, air flow rate 40m<sup>3</sup>/h
- Input air pressure 3bar, output air pressure 1.2bar, air flow rate 48m<sup>3</sup>/h
- Input air pressure 4bar, output air pressure 1.2bar, air flow rate 56m<sup>3</sup>/h
- Input air pressure 5bar, output air pressure 1.2bar, air flow rate 70m<sup>3</sup>/h
- Input air pressure 6bar, output air pressure 1.2bar, air flow rate 80m<sup>3</sup>/h

### DESCRIPTION

Front flange with air barrier and tempered glass, for housings in stainless steel.

Window with extra clear tempered glass

- Usable diameter: 95mm (3.7in)
- Thick: 6mm (0.24in)
- Operating temperature: 260°C (500°F) max, thermal gradient 108°C (226.4°F) max

Unit weight: 2.1kg (4.6lb)

### PART NUMBER

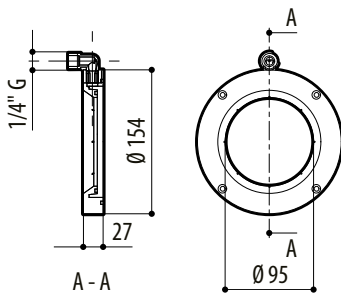
ONXMAIRB Front flange with air barrier and tempered glass

### PACKAGE

Model Number	Weight	Dimensions (WxHxL)	Master carton
ONXMAIRB	2.3kg (5lb)	14x25.5x20cm (5.5x10x7.9in)	-

### TECHNICAL DRAWINGS

The indicated measurements are expressed in millimetres.



ONXMAIRB