

NXPTZ SERIES2 UNBEATABLE OUTDOOR PERFORMANCE



EN

UIDEOTECH
OUTDOOR VIDEO SECURITY

WITNESS THE EVOLUTION OF OUTDOOR VIDEO SECURITY

Videotec is an Italian manufacturer operating in the security industry since 1986 and specialized in the design and creation of professional video surveillance products for outdoor environments.

FUTURE-PROOF TECHNOLOGY

All product ranges offered are proudly “Made by Videotec” and, therefore, Videotec owns complete expertise for all of its products with total control over mechanics, electronics, positioning, networking, software and firmware.

This gives a significant competitive advantage in meeting the needs of personalized solutions or integrations with third-party systems, with the guarantee of Videotec quality, cyber-security, reliability and future-proof technology.

OUR MISSION

As a unique firm created with the aim of shaping and enhancing a select market, we strive relentlessly to boost our clients' growth and satisfaction by constantly making an effort to cultivate our teams' expertise, professionalism, and creativity. Thanks to our focus on client prosperity and well-being, we are all better off.

CERTIFIED QUALITY AS A COMPETITIVE ADVANTAGE

Videotec is an ISO 9001:2015 & ISO 14001:2015 certified company.

DIFFERENTIATORS: 100% INTERNAL KNOW-HOW AND TECHNOLOGY

Designed to be zero maintenance.

Durability: 3 Years warranty as a standard. Extended warranty available up to 5 years.

Variety of custom choices: Build the best product configuration for your specific application in house.

Certified products: From international industry standards and other environmental product testing.

Open standard integration: Contributing member of ONVIF Testing of VMS and third-party products.

Additional services: Factory/Site Acceptance Testing Videotec Technical Training.



NXPTZ SERIES2

UNBEATABLE OUTDOOR PERFORMANCE

WIPER
camera is standard equipped with a wiper. The optional washer system helps ensure a clear view in any environmental conditions.

MATERIAL
Construction in stainless steel AISI 316L with electro-polished and micro-shot peened external finishing for an increased corrosion resistance.

CYBER SECURITY
Thanks to digitally signed firmware, password-restricted access, access control, centralised management of certificates and compliance with **ONVIF Security Service specifications**, Videotec guarantees that all its IP products will have the highest level of security during data transfer and device access. products will have the highest level of security during data transfer and device access.



THERMAL CAMERA
thermal PTZ or dual vision network PTZ models are also available for extreme precision in detection and perimeter monitoring and high-risk environment monitoring and monitoring with poor lighting conditions. The integrated thermal video cameras also offer radiometry features for precise temperature readings, useful in monitoring industrial processes.



LLOYD'S REGISTER CERTIFICATION FOR MARINE APPLICATIONS

The issuance of this certificate by Lloyd's Register certifies that Videotec products are compliant with the stringent quality and reliability requirements demanded by the maritime sector's international standards.

EASY TO INSTALL

The double cable entry and the numerous accessories and supports available (washing system, communication box, pre-wired cables, cable glands, wall supports, railing supports, corners and pole), allow exceptional installation flexibility. The compact design adapts to narrow spaces, while the reduced weight of the unit makes it simpler to mount.

OUTDOOR VIDEO SECURITY

VIDEO SECURITY FOR MARINE OFFSHORE & ONSHORE ENVIRONMENTS

Security and safety management in onshore and offshore marine environments plays a paramount role. Effective video surveillance of critical settings and sensitive processes is, in particular, of utmost importance to ensure operations run smoothly, thereby protecting lives and property.

Marine surveillance camera stations operate in one of the harshest environments in nature and equipment needs to be specifically designed in compliance with the most stringent quality specifications.

Thanks to 35 years of experience, Videotec has unsurpassed knowledge in creating video security products for any critical environment and can respond to all these changing and challenging demands, providing optimal and tailor-made video security solutions.

Today they offer the most advanced, well-researched technical features for professional systems that operate in offshore/onshore marine industries.

These devices are 100% in-house designed and manufactured, using the best quality components and state-of-the-art materials, which leaves no doubt about their exceptional robustness, reliability and unrivalled performance.

OFFSHORE

- Sea Going Vessels
- Offshore Platforms
- Lng Carrier
- Fpso Vessels
- Tanker Ships
- Cargo Ships
- Drill Ships and Rigs
- Fishing Vessels
- Dredging Ships
- Naval Vessels
- Cruise and Ferry Boats

ONSHORE

- Ports
- Harbours
- Ship Docking
- Pipelines
- Dangerous Industrial Areas
- Dangerous Industrial Processes



OUTDOOR VIDEO SECURITY



NXPTZ SERIES2

OPTICS PACKAGE



1. OFFSHORE



2. MARITIME NAVIGATION



3. SHIP DOCKING



4. ONSHORE
INDUSTRIAL PROCESS CONTROL



5. ONSHORE
PERIMETER APPLICATIONS



6. TUNNEL



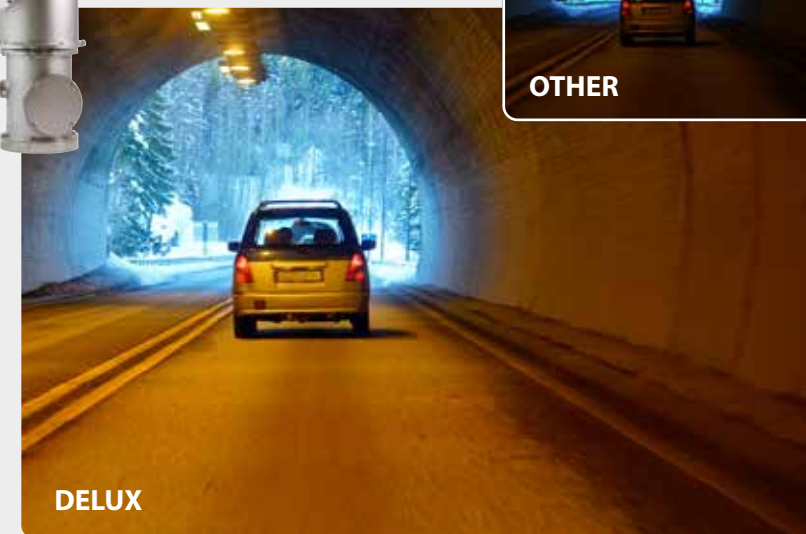
7. BRIDGES

NXPTZ SERIES2 DELUX CAMERA

The IP Super low-light FullHD 1080p video camera and Delux technology offer unparalleled brightness and provide video footage with crispy details and bright colours both during the day and at night.

The powerful 30x optic zoom and the 60fps film speed allow you to accurately identify the details of an event, including dynamic and rapidly changing scenes.

This PTZ camera provides 3 Full HD streams with H.264/Avc digital compression. It can be connected to an Ethernet network easily and can send video streams to digital monitors and storage systems. It complies with ONVIF, Profile T, Profile S and Profile Q protocols.



NXPTZ SERIES2 SONY FCB-EV7520 CAMERA

MAXIMUS MPX SERIES2 with the SONY FCB-EV7520 camera has a 30x optical zoom and a 1/2.8" Exmor R™ CMOS sensor with Full HD 1080/60p resolution that produces the highest image quality.

The image stabilization algorithm means even the smallest camera vibrations are detected and any blur in the footage is dynamically corrected. This results in a sharp image of the scene being surveilled.

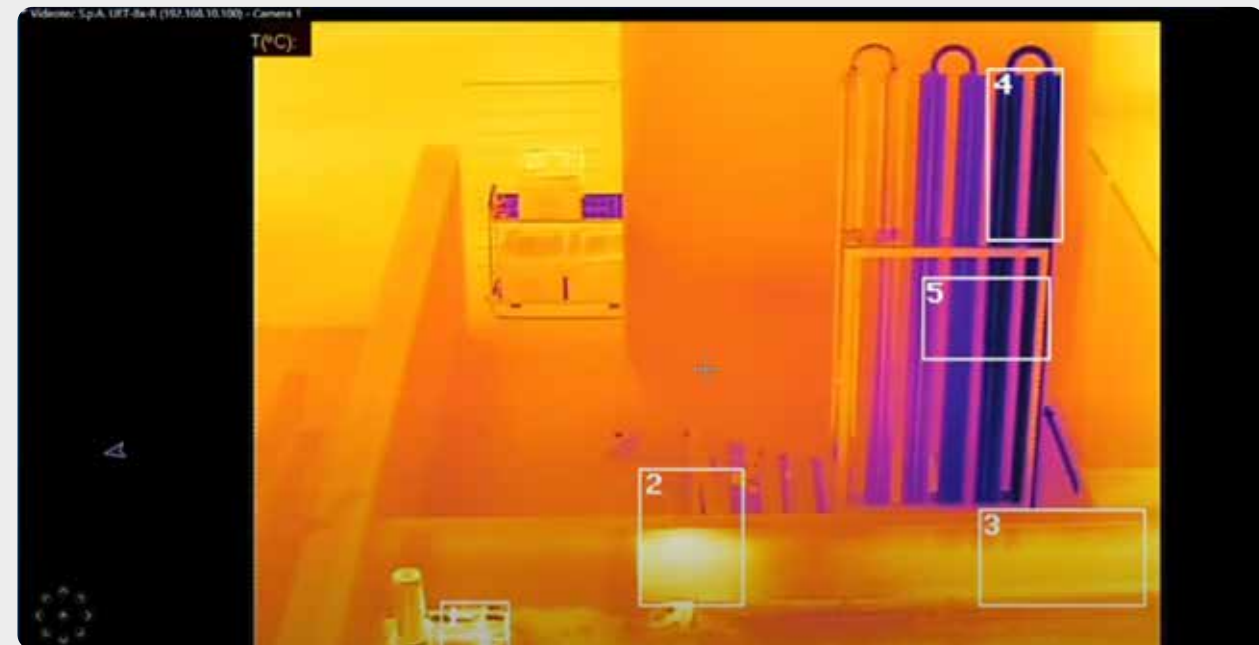
With MPX SERIES2 and the SONY camera, you can set up to **24 dynamic privacy zone masks**. These masks change size based on the pan/tilt/zoom position so objects that shouldn't be seen remain hidden. The advanced SONY technology brings Wide Dynamic Range and a configurable High Light Compensation that allows optimal management of contrasting light and dark conditions.



NXPTZ SERIES 2 RADIOMETRIC FUNCTIONS

This technology is **designed to protect investment and process monitoring and to safeguard personnel on site** and can be a very valuable use for different vertical markets with the **capability of monitoring multiple assets**, such as connection points, transformers, bushings, insulators, isolators, arrestors, breakers. For example in a substation, we can monitor several transformers and perform preventive maintenance.

The defined **ROIs** are scaled proportionally to the digital zoom. So, when zooming in the ROI is increased and when zooming out the ROI is decreased. PTZ ROIs are set to preset PAN and TILT positions (not zoom) so they then change in relation to the zoom.



NXPTZ SERIES 2 PTZ thermal camera can identify targets moving in the dark or at distance with extreme accuracy.

As well as this, it has radiometric functions that allow **precise temperature detection based on the image's 4 main pixels.**

Also available are models with **advanced radiometry** that can measure the temperature of an object in any point of the image by defining up to **5 ROI (Region of Interest)** for every preset position.

The device can be configured so that it independently generates a Radiometric Alarm and/or Warning via ONVIF Events on the VMS. For example, an event can be sent when:

- Temperature is **BELOW** a set value
- Temperature is **ABOVE** a set value
- Temperature is **BETWEEN** two set values
- Temperature is **OUTSIDE** two set values

In camera models with advanced radiometric functions, thermal cameras also offer three temperatures: minimum, average and maximum. Radiometric rules can be linked to exceeding one of these three temperature thresholds.

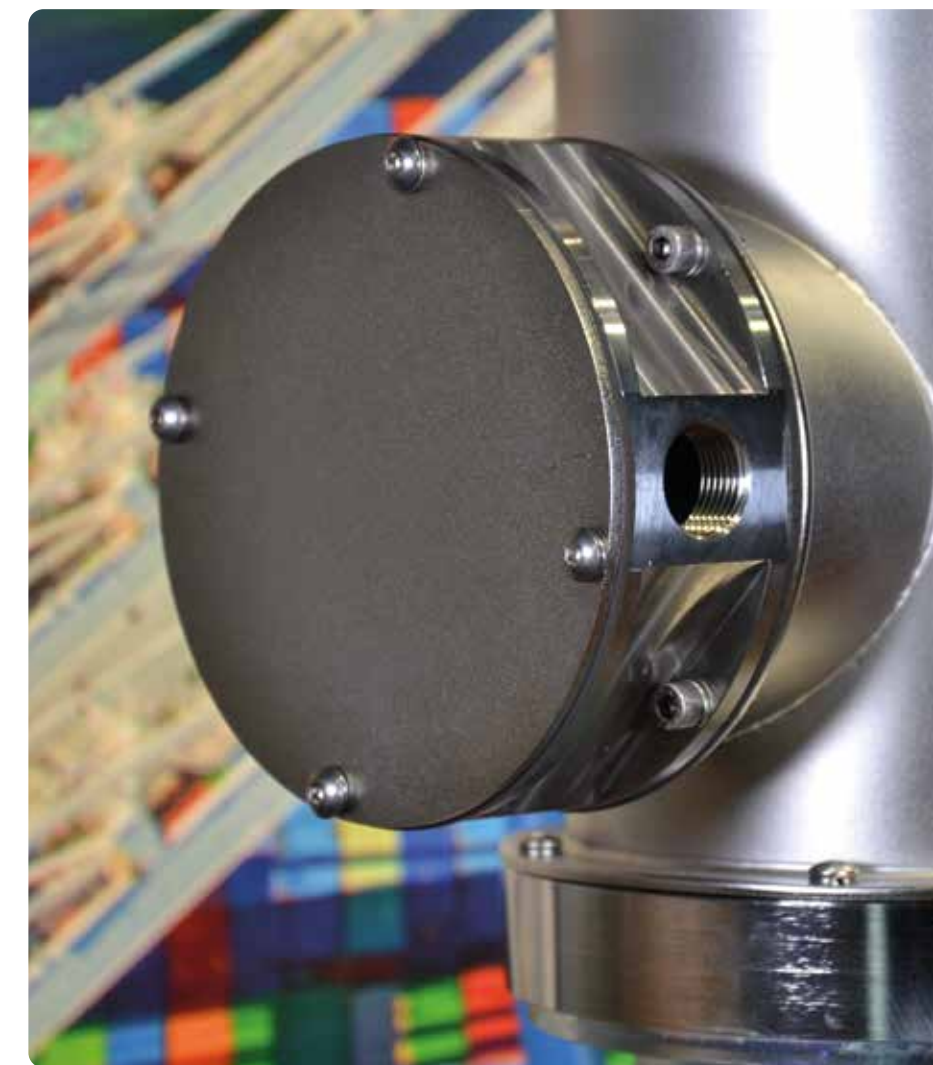
NXPTZ SERIES2 SFP MODULE CAMERA PLUGGABLE

The NXPTZ SERIES2 PTZ cameras can be connected via **fiber optic** thanks to the SFP module housed within the unit, by means of a specially developed accessory (NXPTZSFP).

The **SFP module** (Small Form Factor Pluggable) is a small transceiver that connects to the PTZs SFP port and converts serial electrical signals into serial optical signals.



SFP module



Accessory for fiber optic connection



VIDEOTEC ANALYTICS

The video analysis technology, integrated into Videotec cameras, offers an end-to-end solution for preventative detection of intrusions in outdoor monitoring applications of critical infrastructures, industrial sites and perimeters.

Videotec Analytics is the result of more than 10 years of research and design, carried out by a team of R&D professionals, cooperating together with prestigious international universities and research centres.

THE ADVANTAGES OF VIDEO ANALYTICS

- Maximum preventative anti-intrusion efficiency: every part of the system is designed and automated to allow immediate and preventative actions against any possible threat.
- A reduction in human error and costs.
- Reduced storage space needed: only necessary footage is recorded.
- Optimal external operation in the most critical and complex atmospheric conditions.
- Videotec Analytics enables the geolocation function: GeoMove&Track. This function allows a form of cooperation between two Videotec cameras via an intelligent language to create advanced actions also on the more common video surveillance systems. This function offers the benefit of having a complete, turn-key positioning and tracking solution, guaranteed by Videotec.
- Unbeatable detection performance even at long distances, thanks to the analysis of detail-rich high-definition images.
- Reduced time and effort needed to monitor, detect and search the recordings for anomalous events. The resulting security system is highly efficient, reliable and convenient.

HOW DOES VIDEOTEC ANALYTICS WORK

Every time there is an alarm, the auto-tracking automatically activates, and event metadata is sent to the VMS via the ONVIF protocol. Simultaneously, the security operators are then alerted, and recording starts. The camera keeps the moving target at the centre of the frame and zooms in on the target to make recognition easier. The metadata can be used to frame the target with a bounding box for identification of the subject or can be used to activate alarms or begin recording.

RULES

Depending on the rules set, an alarm starts, and the auto-tracking is activated if an object enters, exits, or appears or stops more than allowed in an area.

CALIBRATION

The operator can calibrate the scene's point of view, so it is possible to render the targets in 3D.

TARGET CLASSIFICATION

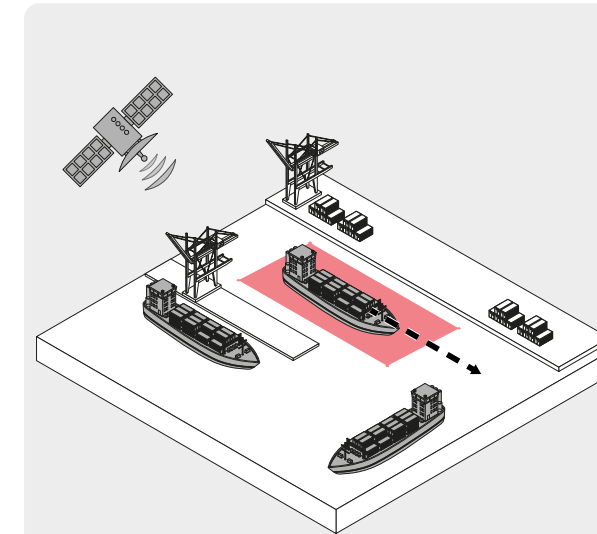
After a simple calibration procedure, targets can be classified into the following categories: generic objects, person, vehicle. Thereby, targets will trigger an alarm based on their size. The result is a drastic reduction of false alarms caused by irrelevant targets.

GEO-MOVE FUNCTION

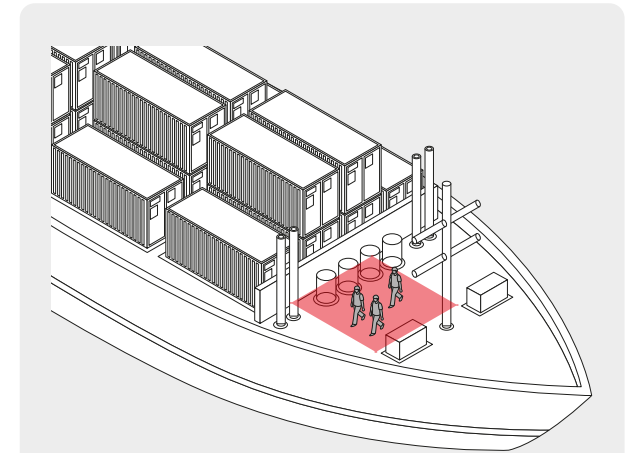
The GEO-MOVE function allows cameras to communicate with each other using intelligent language and create advanced actions. Typically, the GeoMove&Track activity is performed using a fixed camera or PTZ, with Videotec on-board analytics, which carries out detection in a certain area.

When a target is sighted, this camera sends the target's geo-coordinates to a second PTZ camera, which uses them to frame the target. Besides, if the second PTZ is also equipped with analytics functions, it will in turn activate detection and auto-tracking.

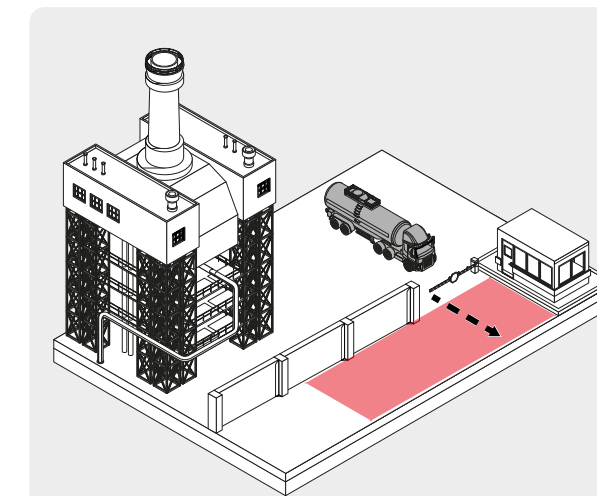
GeoMove&Track can interface with third-party software that provides the geo-coordinates of an object, for example Video Management Software (VMS) for traditional video surveillance to show targets on maps, or Vessel Tracking Service (VTS) systems for navigation control services, also in combination with radar control systems.



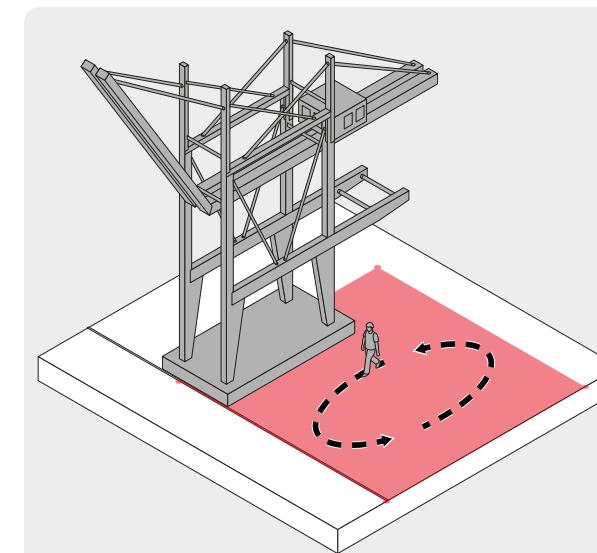
GeoMove. GeoMove function can interface with third-party software providing the geo-coordinates of an object.



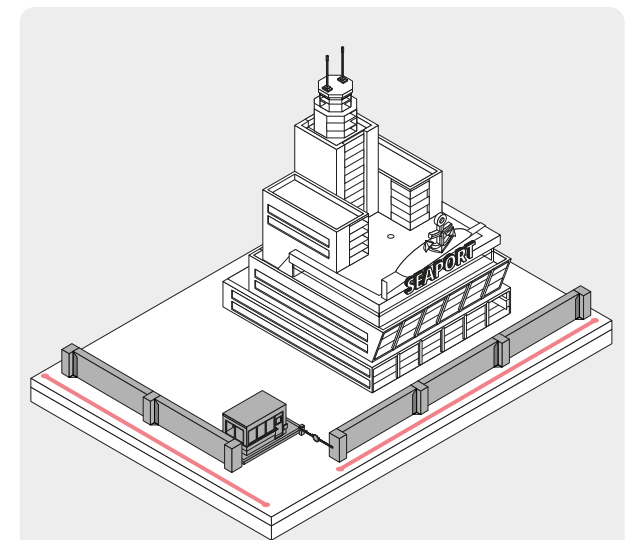
Entering/Leaving Area. The target triggers an alarm if it enters or leaves a specific area on board.



Safe Area. The target triggers an alarm if it stays in a specific area longer than a defined time.



Loitering. The target triggers an alarm if it stays in a specific area longer than a defined time.



Line Crossing. The target triggers an alarm if it crosses the line in one direction or multiple directions.



NXPTZ SERIES2

STAINLESS STEEL PTZ CAMERAS



The **NXPTZ SERIES2** PTZs are resistant to rust and corrosion and do not require maintenance thanks to the absolute precision of the construction process and the solid AISI 316L stainless steel construction with micro-shot and electropolished surfaces.

The SERIES2 cameras have the possibility of easily connecting the PTZ using fiber optic thanks to the slot of the SFP module installed directly at the bottom of the unit.

There are numerous accessories available such as a washing system and wall, parapet, corner and pole supports.

As well as this, the compact design means it can be installed in the tightest spaces, while the unit's reduced weight makes assembly simple.

The NXPTZ SERIES2 video camera with Videotec Analytics integrates robust algorithms for accurate detection with PTZ and precise, fluid auto-tracking even in the harshest climate conditions, ensuring that the operator has complete situational awareness at all times.



- IP66
 - IP67
 - IP68
 - IP69
 - TYPE4X
-

NXPTZ SERIES2

STAINLESS STEEL PTZ CAMERAS



NXPTZ SERIES2

NXPTZR SERIES2

NXPTZT SERIES2

CAMERA	SONY FCB-EV7520	DELUX TECHNOLOGY		
Type of camera	Day/Night camera	Day/Night camera	Thermal camera	Thermal camera + Day/Night camera
Image electronic stabilizer	√	-	-	√
Resolution	Full HD (1920x1080)	Full HD (1920x1080)	720x480 (interpolated resolution)	Thermal camera: 720x480 (interpolated resolution) Day/Night: Full HD (1920x1080)
Minimum illumination	Colour: 0.0013lx (50 IRE, High sensitivity on) B/W: 0.0008lx (30 IRE, High sensitivity on)	Colour: 0.006lx (F1.6, 30 IRE) B/W: 0.0006lx (F1.6, 30 IRE)	-	Day/Night: Colour: 0.0013lx (50 IRE, High sensitivity on) B/W: 0.0008lx (30 IRE, High sensitivity on)
Zoom	30x (360x with digital zoom)	30x (480x with digital zoom)	2x, 4x (336x256), digital zoom 2x, 4x, 8x (640x512), digital Zoom	Thermal camera: 2x, 4x (336x256), digital zoom, 2x, 4x, 8x (640x512), digital Zoom Day/Night: 30x (360x with digital zoom)
Lens	f= from 4.3mm (wide) up to 129mm (tele), from F1.6 up to F14	f= from 4.5mm (wide) up to 135mm (tele), from F1.6 up to F9.6	9mm, 13mm, 19mm, 25mm, 35mm	Thermal camera: 9mm, 13mm, 19mm, 25mm, 35mm, 50mm Day/Night: f= from 4.3mm (wide) up to 129mm (tele), from F1.6 up to F14
Privacy zones masking	√ (dynamic masking)	√	-	√ (dynamic masking)
MECHANICAL				
Material	AISI 316L stainless steel construction	AISI 316L stainless steel construction	AISI 316L stainless steel construction	AISI 316L stainless steel construction
Cable	Pre-wired multipolar cable	Pre-wired multipolar cable	Pre-wired multipolar cable	Pre-wired multipolar cable
Horizontal rotation	360°, continuous rotation	360°, continuous rotation	360°, continuous rotation	360°, continuous rotation
Vertical rotation	From -90° up to +90°	From -90° up to +90°	From -90° up to +90°	From -90° up to +90°
Horizontal speed (variable)	From 0.1°/s up to 100°/s	From 0.1°/s up to 100°/s	From 0.1°/s up to 100°/s	From 0.1°/s up to 100°/s
Tilt speed (variable)	From 0.1°/s up to 100°/s	From 0.1°/s up to 100°/s	From 0.1°/s up to 100°/s	From 0.1°/s up to 100°/s
ELECTRICAL				
Supply voltage/Current consumption	230Vac, 0.5A, 50/60Hz 120Vac, 1A, 50/60Hz 24Vac, 5A, 50/60Hz	230Vac, 0.5A, 50/60Hz 120Vac, 1A, 50/60Hz 24Vac, 5A, 50/60Hz	230Vac, 0.5A, 50/60Hz 120Vac, 1A, 50/60Hz 24Vac, 5A, 50/60Hz	230Vac, 0.5A, 50/60Hz 120Vac, 1A, 50/60Hz 24Vac, 5A, 50/60Hz
Power consumption	120W max	120W max	120W max	120W max
Optical fiber	Slot SFP	Slot SFP	Slot SFP	Slot SFP
SOFTWARE				
Communication protocol	ONVIF, Profile Q, Profile S and Profile T	ONVIF, Profile Q, Profile S and Profile T	ONVIF, Profile Q, Profile S and Profile T	ONVIF, Profile Q, Profile S and Profile T
Video compression	H.264/AVC, MJPEG, MPEG4, snapshot JPEG	H.264/AVC, MJPEG, MPEG4, snapshot JPEG	H.264/AVC, MJPEG, MPEG4, snapshot JPEG	H.264/AVC, MJPEG, MPEG4, snapshot JPEG
Video analytics	optional	optional	-	-
ENVIRONMENT				
Operating temperature	From -40°C (-40°F) up to +65°C (149°F)	From -40°C (-40°F) up to +65°C (149°F)	From -40°C (-40°F) up to +65°C (149°F)	From -40°C (-40°F) up to +65°C (149°F)

ACCESSORIES



OHEP90INJ
PoE (90w) Power Injector with one channel
 • For installation indoors (OHEP90INJ)
 • For installation outdoor(OHEP90INJO)



FM1010
EMC FILTER FOR MARINE CERTIFICATION
 • The filter must be connected to the power line of the equipment
 • The filter is not explosion-proof certified
 • Implement adequate protection if used in potentially explosive classified environments (e.g. Atex)
 • Electrical data: from 0 up to 250V DC/AC 50/60 Hz, 6A



SURGEPR
LIGHTNING SURGE PROTECTOR DEVICE
 • For railway application (in compliance with EN50121-4)



COMB
COMMUNICATION BOX IN POLYCARBONATE
 • Designed to work exclusively with Videotec products and accessories
 • 1 SFP port, MSA compliant, Fast Ethernet (100BASE-FX), for fiber optic connection (splice tray included in the product)
 • 3 RJ45 ports, Fast Ethernet (10BASE-T/100BASE-T)
 • 2 bypass for analog video signals with BNC connectors and 2 bypass for I/O signals with multi-pin connectors
 • Extended/Industrial range electronics



WASPT
WASHER PUMP AND 5 OR 23 LITER TANK
 • Polyethylene tank with stainless steel cage
 • Delivery head: 5m (16ft), 11m (36ft) or 30m (98ft)
 • Versions with alarm for the lack of liquid in the tank
 • Operating temperature: from -10°C (14°F) up to +60°C (140°F)
 • Available voltages: 230Vac, 120Vac, 24Vac



WASNX
WASHER PUMP WITH SOLENOID VALVE FOR STAINLESS STEEL PRODUCTS
 • Enclosure made of stainless steel AISI 316L
 • Delivery head: up to 20m (66ft)
 • Water tank capacity: 10l (2.6gal)
 • Operating temperature from -20°C (-4°F) up to +60°C (140°F)
 • Available voltages: 230Vac, 120Vac, 24Vac

STAINLESS STEEL CAMERA BRACKETS



NXPTZWB
WALL MOUNT BRACKET
 • AISI 316L electropolished stainless steel
 • Load rating: 40kg (88lb)
 • Length: 400mm (15.7in)
 • Can be coupled with modular components (NXPTZCW, NXPTZCOL)



NXPTZCOL
POLE MOUNT ADAPTOR
 • AISI 316L electropolished stainless steel
 • For pole diameters: from 110mm (4.3in) up to 150mm (5.9in)
 • Load rating: 50kg (110lb)
 • Dimensions: 198x182mm (7.8x7.2in)



NXPTZCW
CORNER MOUNT ADAPTOR
 • Load rating: 50kg (110lb)
 • Dimensions: 335x186mm (13.2x7.3in)



NXPTZTW
PARAPET OR CEILING MOUNTING BRACKET
 • AISI 316L electropolished stainless steel
 • Load rating: 40kg (88lb)
 • Dimensions: Ø 238mm (9.4in)

NXPTZ SERIES2	NXPTZR SERIES2	NXPTZI SERIES2
√	√	√
√	√	√
√	√	√
√	√	√



ITALY HEADQUARTERS

VIDEOTEC S.p.A

36015 Schio (VI) - Italy
Via Friuli, 6 - I
T. +39 0445 697411
F. +39 0445 697414
info@videotec.com

FRANCE

VIDEOTEC FRANCE SARL

Immeuble Le Montreal,
19bis Avenue du Québec,
ZA de Courtaboeuf
91140 Villebon sur Yvette - France
T. +33 1 60491816
F. +33 1 69284736
info.fr@videotec.com

AMERICAS

VIDEOTEC SECURITY, Inc.

Gateway Industrial Park,
35 Gateway Drive,
Suite 100 Plattsburgh,
NY 12901 - U.S.A.
T. +1 518 825 0020
F. +1 518 825 0022
info.usa@videotec.com

ASIA PACIFIC

VIDEOTEC (HK) Ltd

Flat 8, 19/F.
On Dak Industrial Building,
No. 2-6 Wah Sing Street Kwai Chung,
New Territories - Hong Kong
T. +852 2333 0601
F. +852 2311 0026
info.hk@videotec.com

