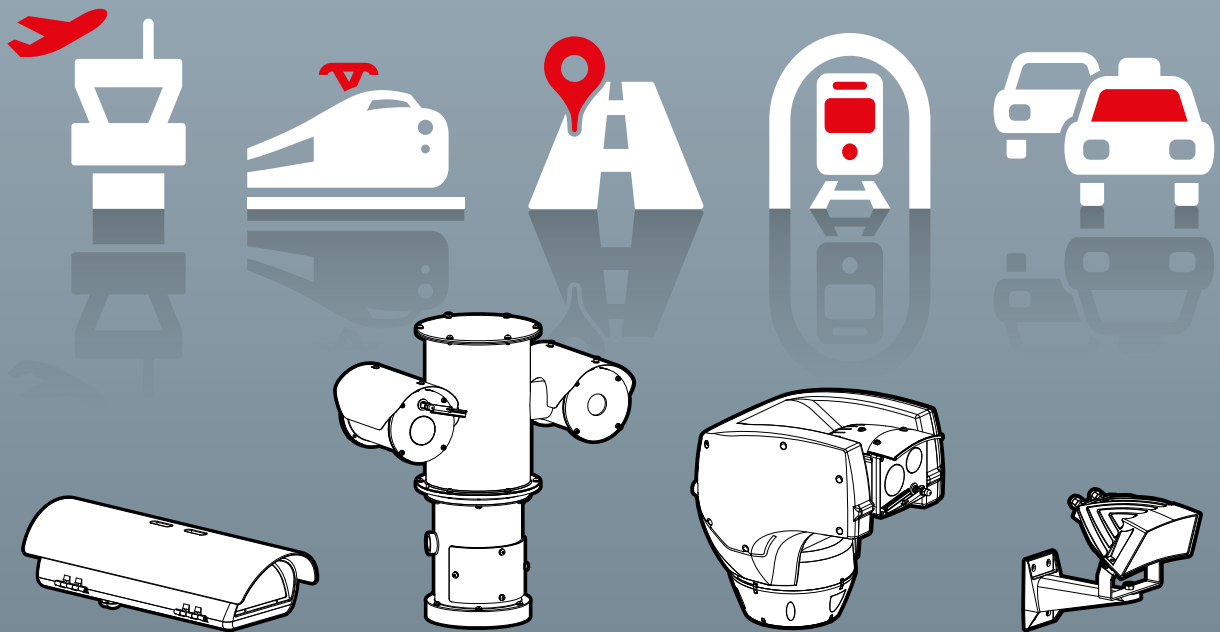
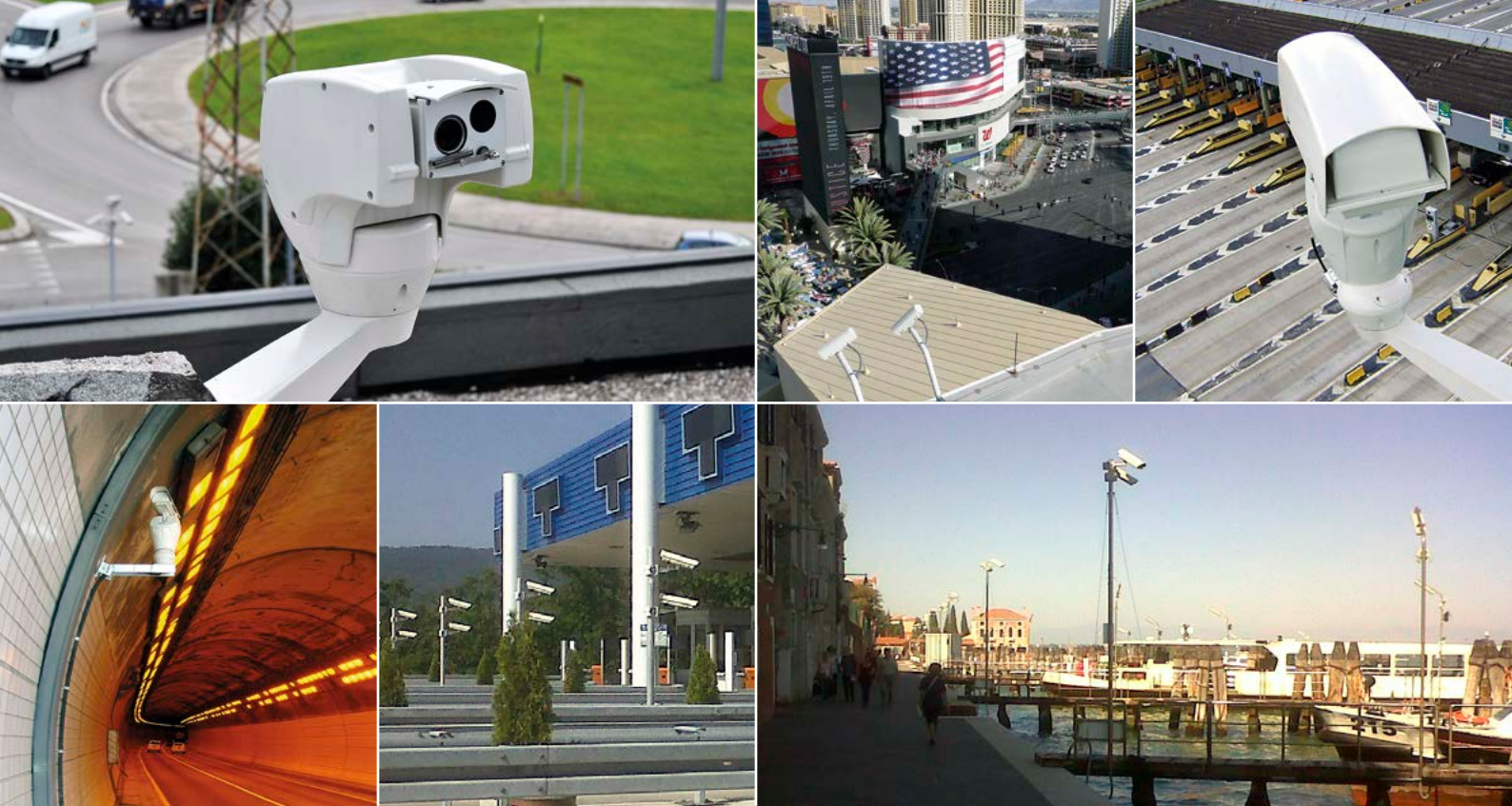


# CCTV PRODUCTS FOR TRAFFIC & HIGHWAYS CONTROL



Excellent Traffic Monitoring  
for any Situation and Environment





## VIDEOTEC COMMITMENT TO EXCELLENCE

MANUFACTURER SINCE 1986, ITALY

WIDE ARRAY OF CCTV PRODUCTS

TOP-LEVEL CUSTOMER SERVICE

CONSTANT EVOLUTION TOWARDS EXCELLENCE

3 BRANCHES IN FRANCE, USA/CANADA, ASIA PACIFIC

QUALITY AND PROFESSIONAL PRODUCTS (ISO9001)

UNLIMITED FIELD OF OUTDOOR CCTV APPLICATIONS



CCTV PRODUCTS [WWW.VIDEOTEC.COM](http://WWW.VIDEOTEC.COM)



## SITE REFERENCES



### CITY SURVEILLANCE / HIGHWAYS / PARKING LOTS

ULISSE MAXI PTZ camera	Myanmar Birmania
ULISSE PTZ camera	Switzerland
ULISSE PLUS PTZ camera	Perù
ULISSE MAXI PTZ camera	Myanmar
HOV housings	Romania
HOV housings	Serbia
HEK housings	Czeck Republic
HEB housings	Egypt
HOV IPM housings	Romania
ULISSE COMPACT PTZ camera	Russia
PUNTO housings, GEKO illuminators	Phylippines
ULISSE COMPACT PTZ camera	Brazil
ULISSE PTZ camera	Greece
ULISSE PTZ camera	United Kingdom
ULISSE COMPACT PTZ camera	Canada
HOV housings	U.S.A.

### RAILWAYS / UNDERGROUND

HOV housings	India
HEK housings	India
ULISSE COMPACT PTZ camera, HOV housings	UAE
ULISSE COMPACT PTZ camera	Republik of Slovakia
ULISSE COMPACT PTZ camera	Israel
ULISSE COMPACT PTZ camera	Russia

### TUNNEL / BRIDGE

NXM, NXL stainless steel housings	Iran
ULISSE COMPACT PTZ camera	Iran
ULISSE COMPACT PTZ camera	Brazil
NXM stainless steel housings	Canada

### AIRPORTS

VERSO housings	India
ULISSE COMPACT PTZ camera	Kenya
ULISSE COMPACT, ULISSE COMPACT THERMAL PTZ camera	Belarus
ULISSE COMPACT PTZ camera	Hungary

# EVERYWHERE SURVEILLANCE

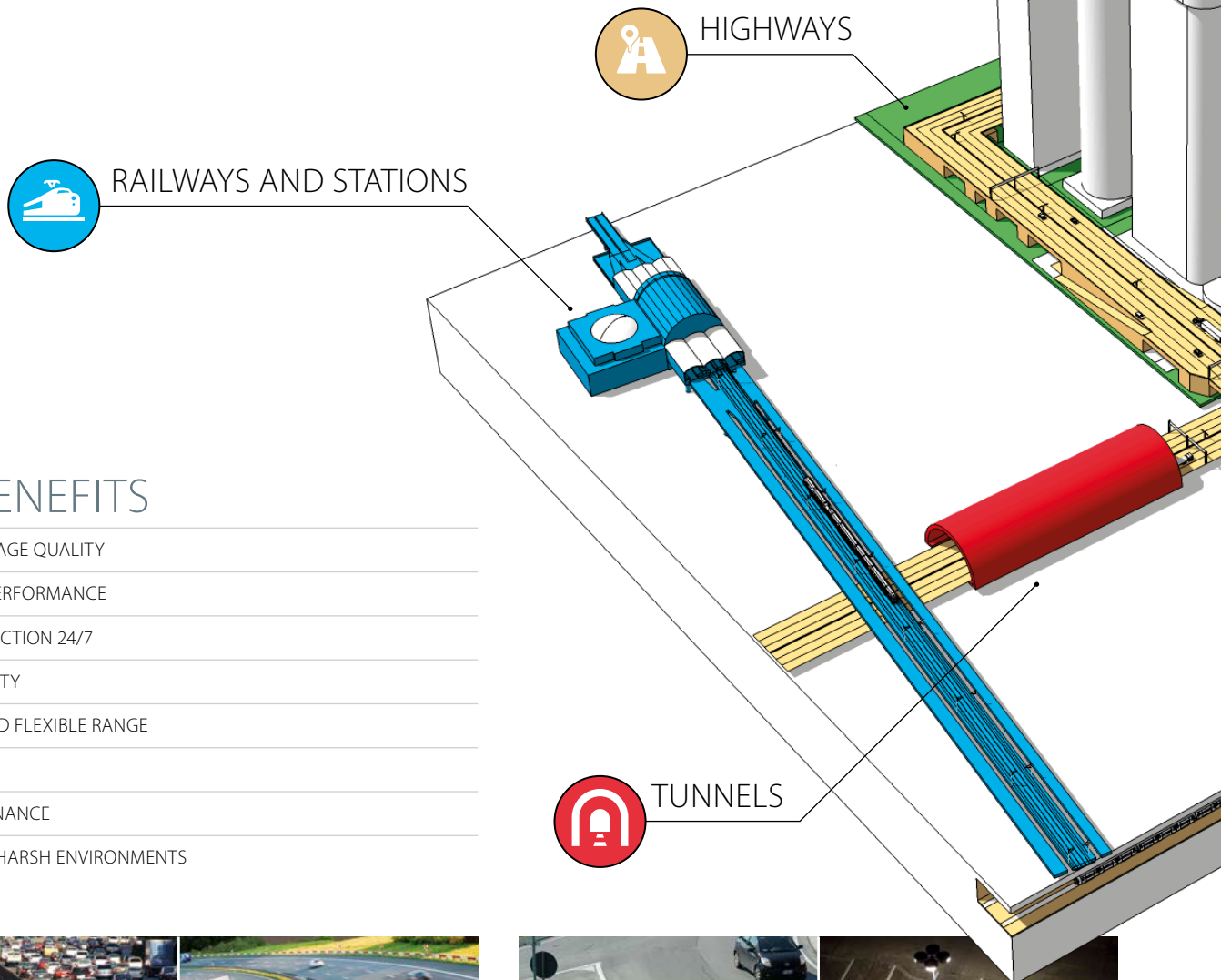
**Videotec's CCTV products are used worldwide for traffic monitoring tasks to increase overall public safety.**

The wide range of PTZ cameras and robust fully equipped housings can assist perfectly in the most critical traffic monitoring conditions, ensuring high resolution video quality with a flexible IP-based management.

The operator can constantly monitor the traffic conditions and rapidly collect information, quickly detecting abnormal and dangerous situations and taking immediate decisions, reducing the possibility of secondary accidents.

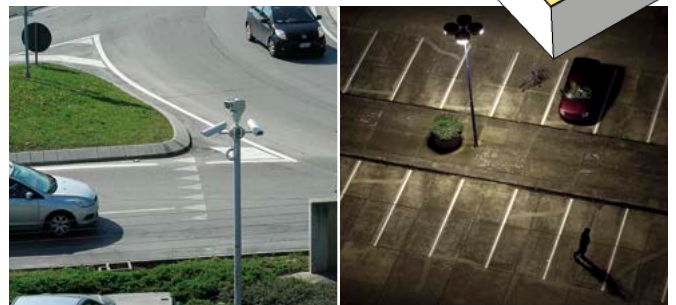
All products have been developed for continuous outdoor use with zero maintenance. They can perfectly manage complex outdoor conditions and lighting variations and withstand difficult environmental or weather conditions.

Videotec's rugged products have been distributed for more than twenty-five years and are currently being used in thousands of prestigious projects throughout the world, including important traffic and urban monitoring installations.

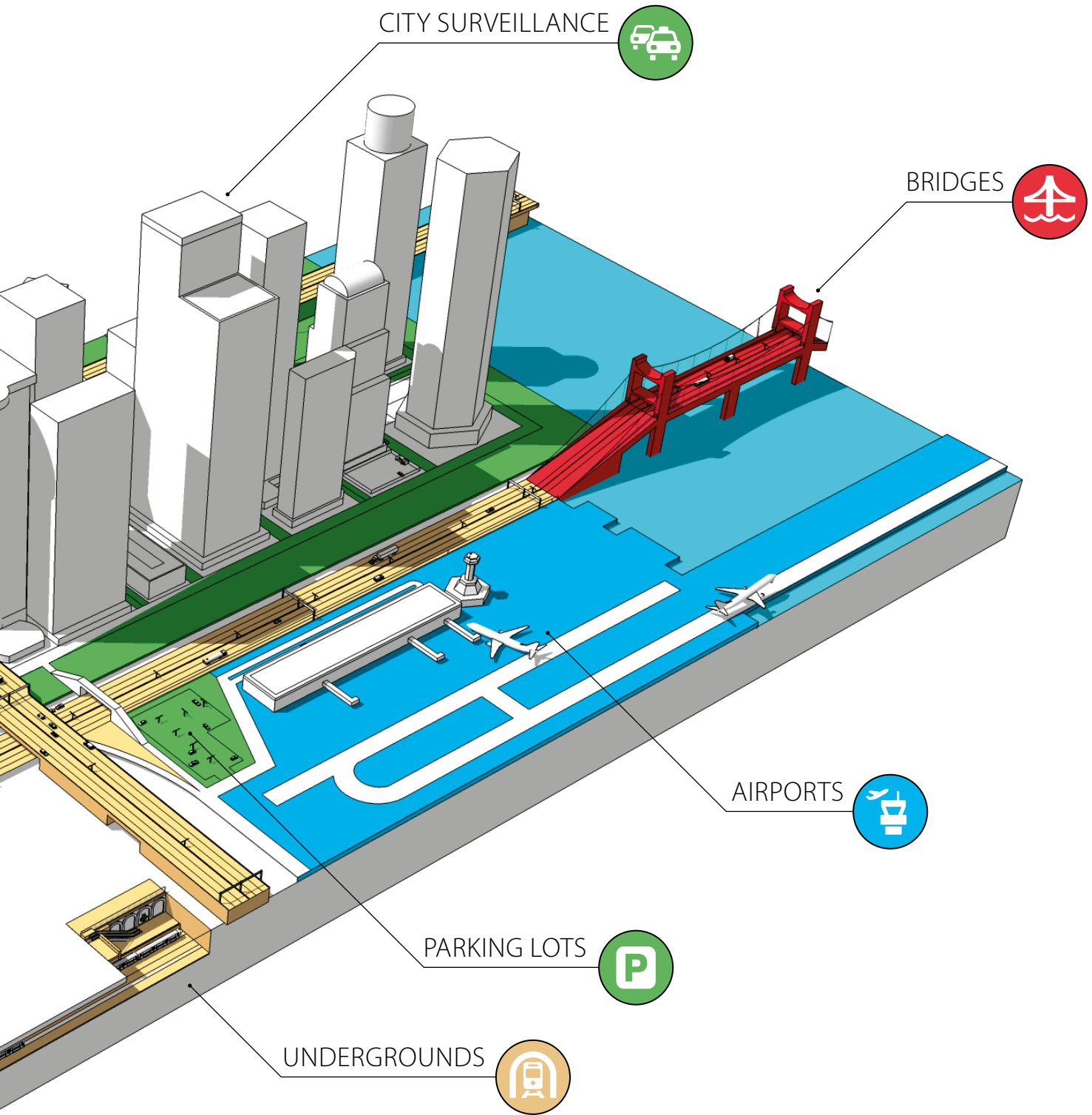


## KEY BENEFITS

- EXCELLENT IMAGE QUALITY
- LONG-TERM PERFORMANCE
- RELIABLE DETECTION 24/7
- IP CONNECTIVITY
- EXTENDED AND FLEXIBLE RANGE
- EASY TO USE
- ZERO MAINTENANCE
- DESIGNED TO HARSH ENVIRONMENTS







# OUR PRODUCTS

## ADVANCED TECHNOLOGIES FOR TRAFFIC VIDEO SURVEILLANCE



### HEAVY-DUTY FIXED AND PTZ CAMERAS



The wide range of rugged housings and PTZ cameras, with dynamic remote positioning capabilities, has been conceived to offer extreme ruggedness, with ease-of-installation and zero maintenance. Ideal to operate in the harshest and most corrosive environments, such as road tunnels or marine environments.

The stainless steel used for their construction is passivated and electropolished AISI316L which makes these products completely impervious to air and water rusting and corrosion and offers excellent weather protection. Thanks to the wiper and washer kit option, the images are always perfect.

The range features dual vision PTZ cameras with Day/Night and VOx sensor Thermal cameras for optimal monitoring in total darkness, through fog, rain, heavy smoke or in the far distance.

All PTZ units are available in analog or IP version. The flexible operator control of Pan/Tilt/Zoom functions allows the transmission of images over Ethernet using H.264/AVC and MJPEG compression, certified ONVIF, Profile S.

International Environmental Certifications:

- EN 60950-1
- EN 60950-22 for equipments installed outdoors
- NEMA TYPE 4X for equipments installed outdoors and corrosion resistant

### ULISSE PTZ RANGE



The ULISSE PTZ camera range is the most proven and reliable of PTZ units, largely employed for traffic surveillance. They ensure constant and efficient traffic monitoring and provide clear video imaging necessary to improve situation awareness, detect abnormal and dangerous situations and accelerate response and decision times.

The ULISSE PTZ cameras can withstand harsh external environments, ensuring high speed and accurate target detection at any time, with zero maintenance. They guarantee enhanced night-time performance thanks to the optional integrated LED illuminator delivering round-the-clock clear images of the area.

The range features dual vision PTZ cameras with Day/Night and VOx sensor Thermal cameras for optimal monitoring in total darkness, through fog, rain, heavy smoke or in the far distance.

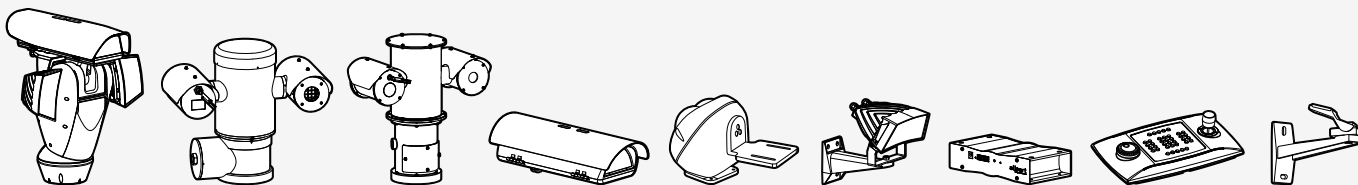
All PTZ units are available in analogue or IP version.

Particularly suited to traffic applications that require detailed images or a wider area coverage, the new ULISSE COMPACT HD is a Full HD 1080p PTZ camera that delivers high quality video and is able to accurately identify specific details of a scenario, such as faces or license plates, even in low light and challenging conditions.

International Environmental Certifications:

- EN 60950-1
- EN 60950-22 for equipments installed outdoors
- NEMA TYPE 4X for equipments installed outdoors and corrosion resistant





## IPM HOUSINGS RANGE FOR POE CAMERAS



This new generation of housings combines innovative intelligent control technology and advanced features for the protection and ideal functioning of IP cameras.

Ideal for outdoor surveillance, such as traffic control, the Hi-PoE IPM (Intelligent Power Management) housing enables an indoor PoE-IP camera to operate even in harsh environmental conditions. Only one standard Ethernet cable is needed to carry video data and power both to the housing and to the camera. No need for any extra electrical cabling.

This new technology makes installations quick and easy as the IPM system automatically enables the housing to regulate the inside temperature and ensure the camera can operate optimally at all times.

The Hi-PoE IPM system automatically detects all options present, such as heating, fan or illuminator and then automatically performs a power balance and thus an appropriate distribution of the same to the connected devices. This ensures optimum operation of the IP camera from -30°C to 60°C (-22°F/+140°F), with temperature control and cold start (start at low temperatures).

The result is greater reliability and flexibility of the network system in addition to simplifying installation operations and reducing costs. The IPM housings are IP66/IP67 weatherproof rated, meaning total protection against rain and dust.

International Environmental Certifications:

- EN 60950-1
- EN 60950-22 for equipments installed outdoors
- NEMA TYPE 4X for equipments installed outdoors and corrosion resistant

## GEKO LED ILLUMINATORS LINE



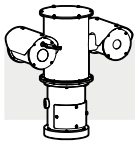
The GEKO series of LED illuminators, provides excellent lighting for SD and HD cameras and makes the total savings on maintenance and installation a very attractive option. The light produced by the illuminators brightens the entire scene evenly, eliminating hotspots and underexposure. The GEKOs provide clear vision up to 240m (787f), in any outdoor environment.

The wide number of models available can serve almost any kind of lighting need and deliver an optimal coverage of the area with beams widths from 10° up to 60°. White light LEDs also available. Ideal for traffic and rail applications the 940nm wavelength is totally invisible to the human eye, thus avoiding the risk of confusing the led red lights with a traffic-light.

Their unique and innovative architecture has been designed with detailed care to facilitate the optimal heat dissipation and to protect internal components, while increasing their efficiency and lifetime, and drastically reducing maintenance costs. The GEKOs can operate in a temperature range as low as -50°C up to 60°C (-58°F/140°F) and still maintain their long term reliability. Supplied with wall mount, these illuminators can also be easily installed under a housing.

International Environmental Certifications:

- EN 60950-1
- EN 60950-22 for equipments installed outdoors
- NEMA TYPE 4X for equipments installed outdoors and corrosion resistant

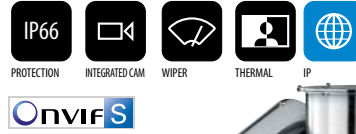


# HEAVY-DUTY PRODUCTS



## NXPTZ AND NXPTZT PTZ CAMERAS RANGE

High speed rotation at 100°/s  
 Day/night camera or dual vision thermal imaging versions  
 AISI 316L Stainless steel construction  
 IP versions, H.264/AVC compression, ONVIF Profile S  
 Integrated wiper



## NXM AND NTC DAY/NIGHT AND THERMAL FIXED CAMERAS RANGE

AISI316L construction  
 Versions for thermal imaging and with factory installed thermal camera  
 Different housings sizes  
 Optional wiper  
 Reinforced heater for temperatures down to -40°C (-40°F)  
 Can be installed on a NXPTH Pan & Tilt head

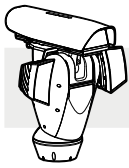


## NXPTH HEAVY DUTY PAN & TILT HEAD

AISI316L construction  
 Suitable to the stainless steel housings series  
 Horizontal fixed speed 5°/s, vertical fixed speed 3°/s







# PTZ RANGE



## ULISSE COMPACT, THERMAL AND HD HIGH SPEED PTZ CAMERAS RANGE

Pan/Tilt variable speed: 0.1°-200°/s

Day/night camera or dual vision thermal imaging versions

IP based versions H.264/AVC

Models with Full HD 1080p camera, 20x zoom, H.264/AVC, ONVIF Profile S

Optional wiper

Optional integrated LED illuminator



## ULISSE AND ULISSE NETCAM PTZ UNIT FOR DAY/NIGHT OR NETWORK CAMERAS AND COMPACT LENSES

Models for network cameras (ONVIF protocol, Profile S)

Versions for thermal imaging viewing

IP based versions (MPEG-4, ONVIF)

Pan/Tilt variable speed: 0.1°-100°/s

Integrated Day/Night camera on demand

Optional wiper

Optional bracket for the mount of two LED illuminators

Cold pack for low temperature down to -30°C (-22°F)



## ULISSE PLUS AND ULISSE PLUS NETCAM PTZ UNIT FOR DAY/NIGHT OR NETWORK CAMERAS AND MEDIUM-LARGE LENSES

Models for network cameras (ONVIF protocol, Profile S)

IP based versions (MPEG-4, ONVIF)

Optional bracket for the mount of two LED illuminators

Variable speed: 0.02°-100°/s Pan; 0.02°-50°/s Tilt

Supplied with integrated wiper

Cold pack for low temperature down to -30°C (-22°F)



## ULISSE MAXI AND ULISSE MAXI NETCAM PTZ UNIT FOR DAY/NIGHT OR NETWORK CAMERAS AND LARGE LENSES

Models for network cameras (ONVIF protocol, Profile S)

IP based versions (MPEG-4, ONVIF)

Versions for thermal imaging viewing

Variable speed: 0.02°-20°/s Pan and Tilt

Supplied with integrated wiper





# CAMERA HOUSINGS



## IPM CAMERA HOUSINGS HOUSINGS WITH IPM TECHNOLOGY (INTELLIGENT POWER MANAGEMENT)

PoE / Hi-PoE power supply for heating, demisting, illuminator, fan and PoE network camera

Category 5e shielded power cable

Compatible with IEEE 802.3af, IEEE 802.3at/PoE Plus

Vandal resistant models

Versions with fan with double air filter

Pre-arranged to mount a GEKO LED illuminator



## CAMERA HOUSINGS WEATHER RESISTANT HOUSING SUITABLE FOR OUTDOOR USE

Robust construction in aluminum or tecnopolymer for applications in harsh environments

Simplified installation and wide choice of accessories and mounting solutions

Dimensions suitable to contain most camera/lenses combinations

Models for extremely low temperatures down to -55°C (-67°F)

Vandal resistant models

Wiper optional in several models

Versions for thermal cameras

Pre-arranged to mount a GEKO LED illuminator



## AVTPS SERIES VANDAL RESISTANT CEILING HOUSING FOR INDOOR INSTALLATION

Impact resistance IK10 according to EN 62262

Key lock

Thick sheet steel construction

Vandal resistant polycarbonate glass

Heather and alarm tamper switch as option



# LED ILLUMINATORS



## GEKO ILLUMINATORS IR AND WHITE LIGHT LED LIGHTING

High efficiency SMD LED and optimized heat sink body to ensure maximum LED durability

Low energy consumption

Different beam pattern and wavelengths

Fully covert 940nm recommended for traffic applications

Supplied with a wall-mount bracket





# ULISSE COMPACT **HD**

**H**igh **Q**uality, **H**igh **S**peed, **H**igh **S**ecurity.



#### CAMERA

1080p, 20x at 30 ips, 2.0 MPx, 20x Optical Zoom, up to four independent streams depending on the configuration.



#### LED ILLUMINATOR

UC-HD features an onboard LED illuminator to deliver clear images of the area even in low light conditions.



#### WIPER

Thanks to the built-in wiper, the images are always perfectly clear. Wide choice of tanks with washer pump.



#### HIGH SPEED

Accurate positioning with speed range up to 200°/sec. The UC-HD response to operator commands is immediate.



#### ONVIF Profile S, H264

Compliance with ONVIF Profile S ensures open architecture for maximum integration with third party systems.



#### -40°C to +50°C (-40°F/+122°F)

The UC-HD can operate in the most severe environmental conditions and in a wide temperature range, with its sophisticated de-icing functions.



**CCTV PRODUCTS**  
[www.videotec.com](http://www.videotec.com)

---

**HEADQUARTERS ITALY**

VIDEOTECH S.p.A.  
Via Friuli, 6 - I-36015 Schio (VI) Italy  
Tel. +39 0445 697411 - Fax +39 0445 697414  
Email: [info@videotec.com](mailto:info@videotec.com)

**FRANCE**

VIDEOTECH FRANCE S.à.r.l.  
Voie du Futur - Zac des Portes - 27100 Val de Reuil, France  
Tel. +33 2 32094900 - Fax +33 2 32094901  
Email: [info.fr@videotec.com](mailto:info.fr@videotec.com)

**AMERICAS**

VIDEOTECH SECURITY, Inc.  
Gateway Industrial Park - 35, Gateway Drive - Suite 100  
Plattsburgh, NY 12901 - U.S.A.  
Tel. +1 518 825 0020 - Fax +1 518 825 0022  
Email: [info.usa@videotec.com](mailto:info.usa@videotec.com) - [www.videotec.us](http://www.videotec.us)

**ASIA PACIFIC**

VIDEOTECH (HK) Ltd  
Flat 8, 19/F., On Dak Industrial Building, No. 2-6 Wah Sing Street,  
Kwai Chung, New Territories, Hong Kong  
Tel. +852 2333 0601 - Fax +852 2311 0026  
Email: [info.hk@videotec.com](mailto:info.hk@videotec.com)



---

*Made in Italy, since 1986*