

# MAXIMUS MHX RANGE, BRACKETS



## MHXWBS

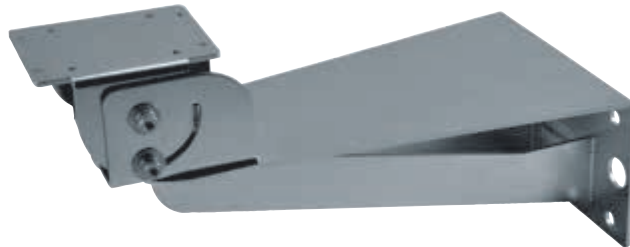
### WALL MOUNT BRACKET

Made of AISI 316L electropolished stainless steel

Load rating: 40kg (88lb)

Length: 440mm (17.3in)

Suitable for: MPXCW, MPXCOL



MHXWBS

## MPXCOL

### POLE MOUNT ADAPTOR

Made of AISI 316L electropolished stainless steel

For pole diameters: from 110mm (4.3in) up to 150mm (5.9in)

Load rating: 50kg (110lb)

Dimensions: 198x182mm (7.8x7.2in)



MPXCOL

## MPXCW

### CORNER MOUNT ADAPTOR

Made of AISI 316L electropolished stainless steel

Load rating: 50kg (110lb)

Dimensions: 335x186mm (13.2x7.3in)

Suitable for: MPXWBA, MHXWBS



MPXCW

## MHXWFCA

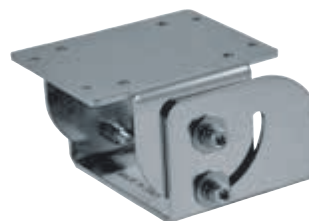
### PARAPET MOUNTING BRACKET

Made of AISI 316L electropolished stainless steel

Load rating: 40kg (88lb)

Dimensions: Ø 101.6mm (4in)

Compatible with the bracket: NXFWBT



MHXWFCA

## NXFWBT

### EXTENSION BRACKET FOR PARAPET MOUNTING

Suitable for MHXWFCA ball joint

Suitable to MVX housings only if coupled with MHXWFCA joint

Made of AISI 316L electropolished stainless steel

Load rating: 70kg (154lb)

Height: 124mm (4.9in)

Suitable for: NXWBPTH1



NXFWBT

## MBXMP

PLATE FOR ASSEMBLY OF THE MAXIMUS MBX WITH MPXCOL POLE ADAPTOR OR WITH MPXCW CORNER ADAPTOR

In stainless steel

Dimensions: 220x240x10mm (8.7x9.4x0.4in)



MBXMP

## TECHNICAL DATA

### MHXWBS

#### MECHANICAL

Bracket for MHX, MHXT, NXM, NXM36, NXM36 Hi-PoE, NXW, NTW, NTM

Suitable for MPXCOL, MPXCW

Made of AISI 316L electropolished stainless steel

Load rating: 40kg (88lb)

Length: 440mm (17.3in)

Unit weight: 5.4kg (11.9lb)

#### PART NUMBER

MHXWBS AISI 316L stainless steel wall bracket

#### PACKAGE

Model Number	Weight	Dimensions (WxHxL)	Master carton
MHXWBS	6.5kg (14.3lb)	58x34x22cm (23x13.4x8.7in)	-

### MPXCOL

#### MECHANICAL

Suitable for MHXWBS

Suitable for MPXWBA

Made of AISI 316L electropolished stainless steel

For pole diameters: 110-150mm (4.3-5.9in)

Load rating: 50kg (110lb)

Unit weight: 4.5kg (9.9lb)

#### PART NUMBER

MPXCOL AISI 316L stainless steel pole adapter module

#### PACKAGE

Model Number	Weight	Dimensions (WxHxL)	Master carton
MPXCOL	4.9kg (10.8lb)	24x15x21.5cm (9.4x6x8.5in)	6

### MPXCW

#### MECHANICAL

Suitable for MPXWBA

Suitable for MHXWBS

Made of AISI 316L electropolished stainless steel

Load rating: 50kg (110lb)

Dimensions: 335x186mm (13.2x7.3in)

Unit weight: 3.6kg (7.9lb)

#### PART NUMBER

MPXCW AISI 316L stainless steel corner adapter module

#### PACKAGE

Model Number	Weight	Dimensions (WxHxL)	Master carton
MPXCW	4.8kg (10.6lb)	36.5x25.5x26cm (14.4x10x10.2in)	5

### MHXWFCA

#### MECHANICAL

Ball joint for housings: MVX, MVXT, MVXHD, MHX, MHXT, NXM, NXM36, NXM36 Hi-PoE, NXW, NTW, NTM

Suitable for: NXFWBT

Made of AISI 316L electropolished stainless steel

Load rating: 40kg (88lb)

Dimensions: Ø 101.6mm (4in)

Unit weight: 2kg (4.4lb)

#### PART NUMBER

MHXWFCA AISI 316L stainless steel ball joint

#### PACKAGE

Model Number	Weight	Dimensions (WxHxL)	Master carton
MHXWFCA	2.5kg (5.5lb)	19x19x19 cm (7.5x7.5x7.5in)	-

### NXFWBT

#### MECHANICAL

Suitable for: MHXWFCA

Suitable to MVX housings only if coupled with MHXWFCA joint

Suitable for NXWBPTH1

Made of AISI 316L electropolished stainless steel

Load rating: 70kg (154lb)

Height: 124mm (4.9in)

Unit weight: 0.9kg (2lb)

#### PART NUMBER

NXFWBT AISI 316L stainless steel parapet mounting bracket

#### PACKAGE

Model Number	Weight	Dimensions (WxHxL)	Master carton
NXFWBT	1kg (2.2lb)	10x16x23cm (4x6x9in)	-

### MBXMP

#### MECHANICAL

In stainless steel

Suitable for MPXCW, MPXCOL

Dimensions: 220x240x10mm (8.7x9.4x0.4in)

Unit weight: 3.7kg (8lb)

#### PART NUMBER

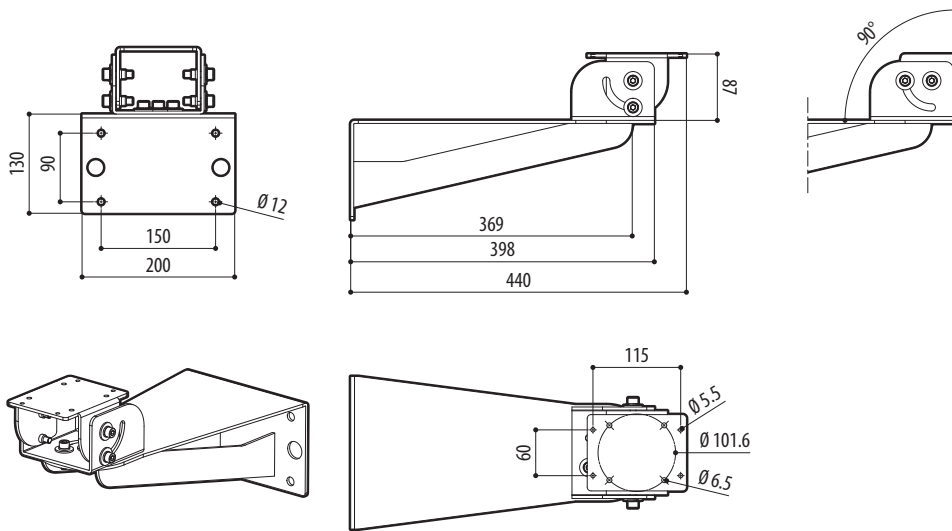
MBXMP Plate for assembly of the MAXIMUS MBX with MPXCOL pole adaptor or with MPXCW corner adaptor

#### PACKAGE

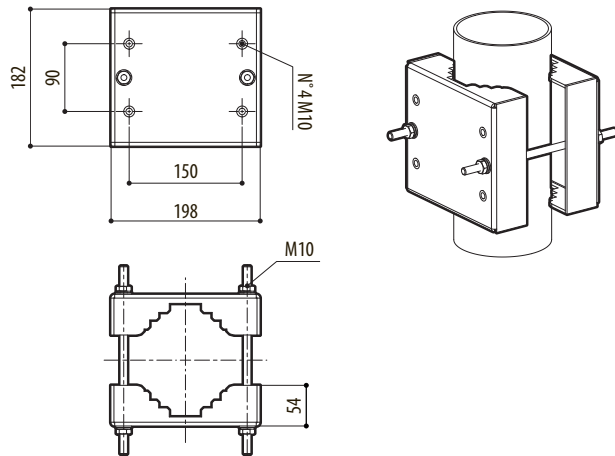
Model Number	Weight	Dimensions (WxHxL)	Master carton
MBXMP	4kg (8.8lb)	33x27x7.5cm (13x10.6x3in)	-

## TECHNICAL DRAWINGS

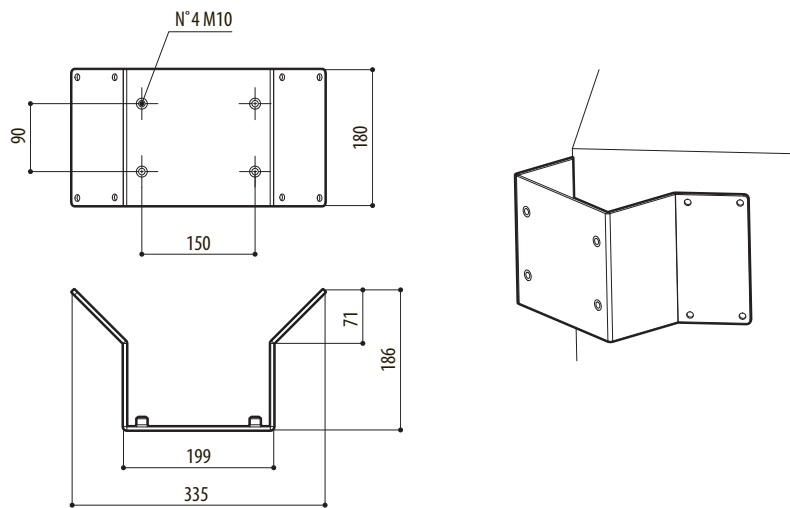
The indicated measurements are expressed in millimetres.



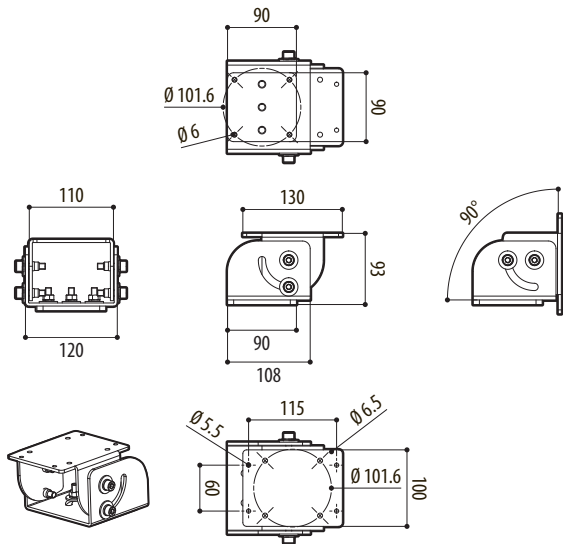
MHXWBS



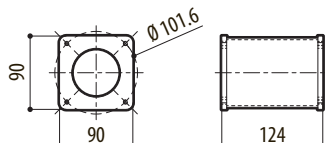
MPXCOL



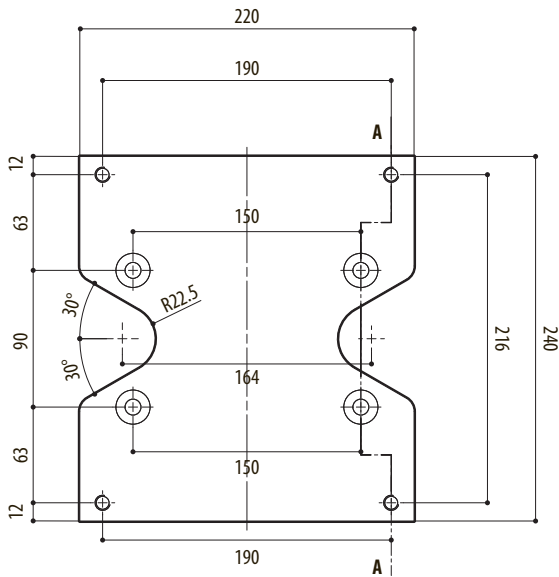
MPXCW



MHXFWCA



NXFWBT



MBXMP