

# EXH RANGE, BRACKETS



## EXWBJ000

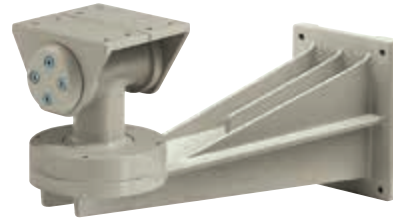
### BRACKET AND BALL JOINT FOR EXH EX-PROOF HOUSING

Solid, anticorrosive aluminium construction

The EXBJ, alone, allows the column mount

Load rating: 35kg (77lb)

Length: 455mm (17.9in)



EXWBJ000

## EXBJ000

### BALL JOINT FOR THE COLUMN MOUNT OF EXH EX-PROOF HOUSINGS

Solid, anticorrosive aluminium construction



EXBJ000

## TECHNICAL DATA

### EXWBJ000

#### MECHANICAL

Solid, anticorodal aluminium construction

Load rating: 35kg (77lb)

Length: 455mm (17.9in)

Unit weight (EXWBJ): 6.6kg (14.5lb)

#### PART NUMBER

EXWBJ000 Bracket and ball joint RAL7032 for EXH series

#### PACKAGE

Model Number	Weight	Dimensions (WxHxL)	Master carton
EXWBJ000	7kg (15.4lb)	27x18x49cm (10.5x7x19in)	-

### EXBJ000

#### MECHANICAL

Solid, anticorodal aluminium construction

Unit weight: 2.9kg (6.4lb)

#### PART NUMBER

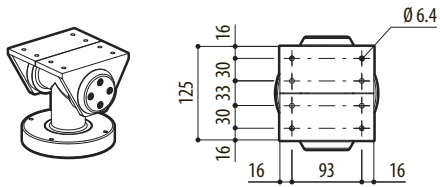
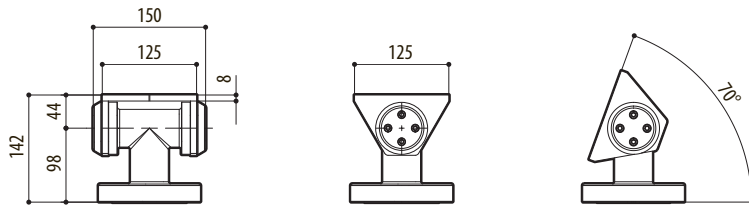
EXBJ000 Only ball joint for EXH RAL7032 housings

#### PACKAGE

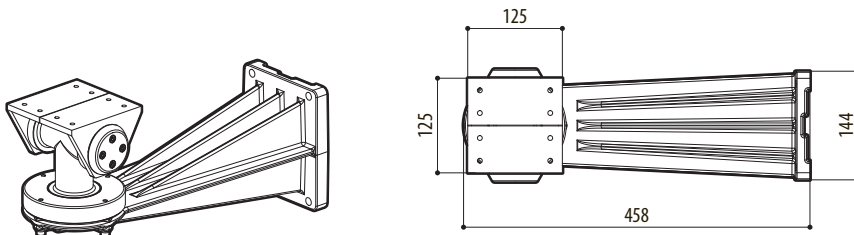
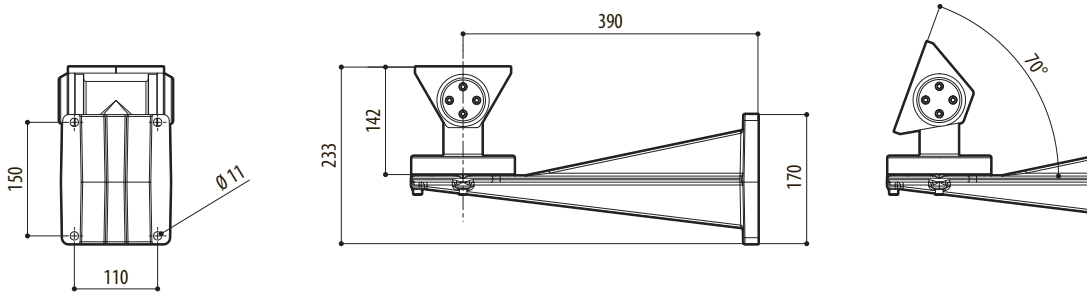
Model Number	Weight	Dimensions (WxHxL)	Master carton
EXBJ000	3.2kg (7.1lb)	16x21x12cm (6.3x8.3x4.7in)	-

# TECHNICAL DRAWINGS

The indicated measurements are expressed in millimetres.



EXBJ



EXWB1000