

EXPT RANGE, BRACKETS



EXPTWB

BRACKET FOR EXPT EX-PROOF PTZ UNIT

Solid anticorodal aluminium construction

Load rating: 100kg (220lb)

Length: 676mm (26.6in)



EXPTWB000

TECHNICAL DATA

EXPTWB

MECHANICAL

Solid anticorrosional aluminium construction

Load rating: 100kg (220lb)

Length: 676mm (26.6in)

Unit weight: 11.3kg (25lb)

PART NUMBER

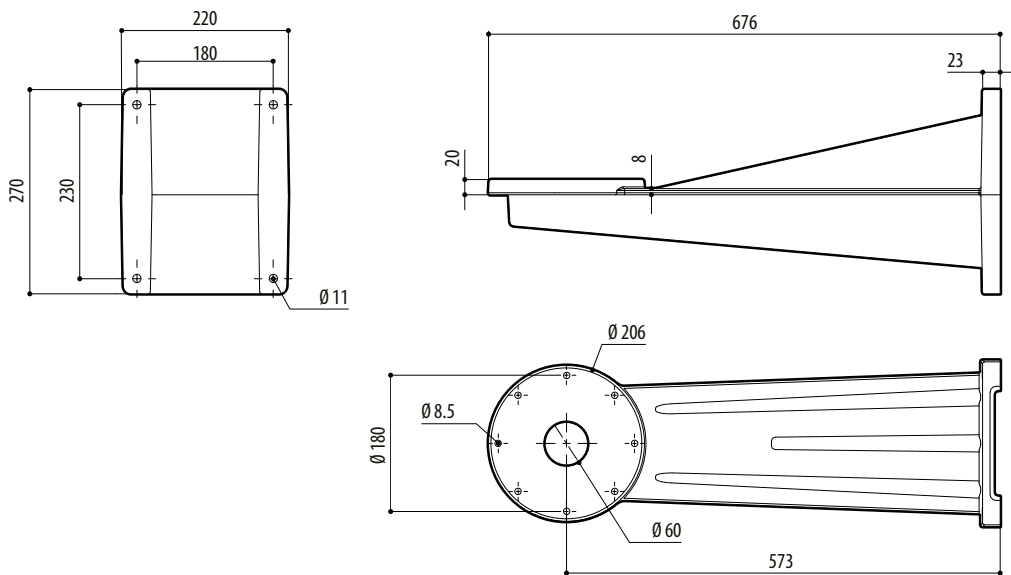
EXPTWB000 Bracket RAL7032 for EXPT series

PACKAGE

Model Number	Weight	Dimensions (WxHxL)	Master carton
EXPTWB000	12kg (26.5lb)	29x66x33cm (11.4x26x13in)	-

TECHNICAL DRAWINGS

The dimensions of the drawings are in millimetres.



EXPTWB