

# NTL

## LARGE HOUSING FOR THERMAL CAMERAS



IP66

IP67



NTL + NXWBL

### DESCRIPTION

This housing for thermal camera provides the vision also in complete darkness, fog, rain, smoke or for long-range distances.

It is possible to use this housing for a wide range of high-security surveillance systems, such as: monitoring and rescue in the event of a fire, public safety, along with airport, industrial and environmental surveillance.

The germanium window has non-scratch treated, Hard Carbon Coating (DLC) on the outside and antireflection inside; the spectral range is from 7.5 $\mu$ m to 14 $\mu$ m.

The big dimensions of this camera housing make it suitable to contain the largest zoom lenses of the market.

The NTL housing can be installed on NXPTH Pan & Tilt head, to obtain a complete positioning system.

### MAIN FEATURES

Made of AISI 316L electropolished stainless steel

Germanium window

IP66/IP67

Available with different window dimensions:  $\varnothing$  55mm (2.1in),  $\varnothing$  70mm (2.8in) and  $\varnothing$  110mm (4.3in)

Available accessories: heater, camera power supply

## TECHNICAL DATA

### GENERAL

Housing manufactured in polished stainless steel (austenitic stainless alloy steel resistant to corrosion and heat):

- AISI 316L
- UNI 6900-71: X 2 Cr Ni Mo 17 12 2
- DIN 17006: X 2 Cr Ni Mo 17 13 2
- N° werkstoff: 1.4404
- AFNOR: Z2 CND 17-12
- BSI: 316S11

The screws utilised are in austenitic alloy stainless steel, corrosion and heat resistant according to the following standards:

- ISO: 7380
- AISI: 316
- ISO quality: A4

### MECHANICAL

Cable glands: 4xPG13.5 (nickel-plated brass for external connections)

Flange thickness: 12mm (0.47in) (front), 9mm (0.35in) (back)

External body polishing

Gaskets: High sealing O-ring

Internal usable area (WxH): 112x112mm (4.4x4.4in)

Internal usable length: 562mm (22.1in)

Internal usable length (with heater): 477mm (18.7in)

Unit weight: 13kg (28.7lb)

### HOUSING'S WINDOW

Germanium window (thick: 2mm (0.08in))

- NTL1K1000  
Usable diameter: 55mm (2.1in)
- NTL1K1300  
Usable diameter: 70mm (2.8in)
- External treatment: antiscratch (Hard Carbon Coating - DLC), antireflection
- Internal treatment: antireflection
- Spectral range: from 7.5µm to 14µm
- Medium transmittance (from 7.5µm to 11.5µm): 90%
- Medium transmittance (from 11.5µm to 14µm): 77%

Germanium window (thick: 3mm (0.1in))

- NTL1K1500  
Usable diameter: 110mm (4.3in)
- External treatment: antiscratch (Hard Carbon Coating - DLC), antireflection
- Internal treatment: antireflection
- Spectral range: from 7.5µm to 14µm
- Medium transmittance (from 7.5µm to 11.5µm): 90.6%
- Medium transmittance (from 11.5µm to 14µm): 76.4%

### ELECTRICAL

Heater (Ton 15°C±3°C (59°F±5°F), Toff 22°C±3°C (72°F±5°F))

- Power supply/Consumption: IN 12Vdc/24Vac, 20W max
- Power supply/Consumption: IN 120/230Vac, 40W max

### ENVIRONMENT

For installation indoors and outdoors

Operating temperature (with heater): from -20°C (-4°F) to +60°C (140°F)

### CERTIFICATIONS

Electrical safety (CE): EN60065

Electromagnetic compatibility (CE): EN50130-4, EN61000-6-3

IP protection degree: EN60529 (IP66/IP67)

EAC certification

### ACCESSORIES

|         |   |
|---------|---|
| ONXLH1  | Heater 120/230Vac   |
| ONXLH2  | Heater 12Vdc/24Vac  |
| ONXPS1B | Wide range power supply for camera IN 100-240Vac - OUT 12Vdc, 1.25A |
| ONXPS2B | Camera power supply IN 230Vac - OUT 24Vac, 400mA                    |

### BRACKETS AND ADAPTORS

|        |   |
|--------|---|
| NXWBL  | AISI 316L stainless steel wall bracket with joint |
| NXWBS1 | AISI 316L stainless steel wall bracket with joint |
| NXCOL  | AISI 316L stainless steel pole adapter module     |
| NXCW   | AISI 316L stainless steel corner adapter module   |
| NXWTU  | Wall adaptor module in stainless steel AISI 316L  |

### RELATED PRODUCTS

|       |                           |
|-------|---------------------------|
| NXPTH | Stainless steel P&T motor |
|-------|---------------------------|

### PACKAGE

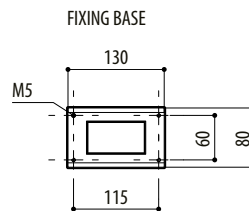
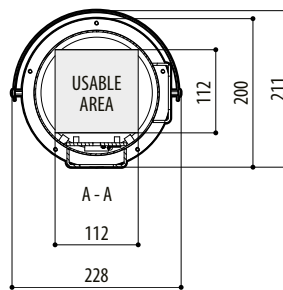
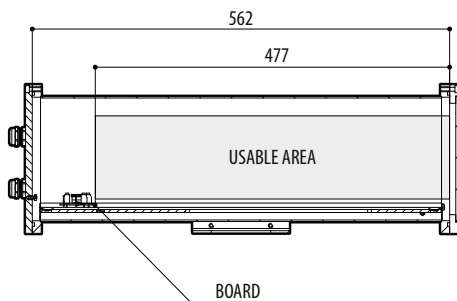
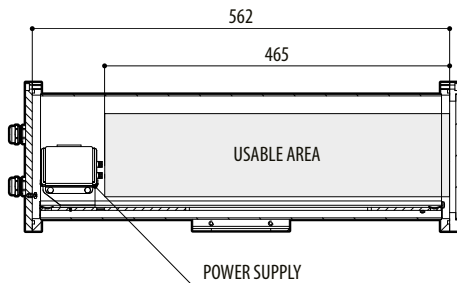
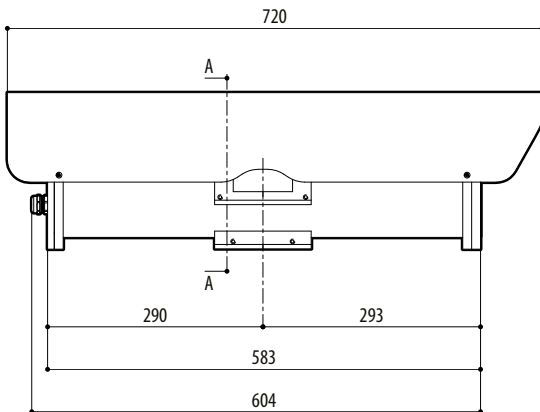
| Model Number | Weight        | Dimensions (WxHxL)                | Master carton |
|--------------|---------------|-----------------------------------|---------------|
| NTL1K1000    | 15kg (33.5lb) | 29.5x35x75cm (11.6x13.8x29.5in) - |               |

## AVAILABLE MODELS

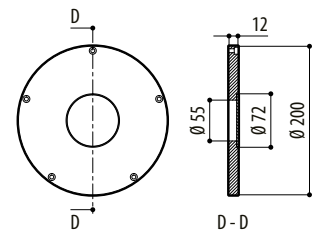
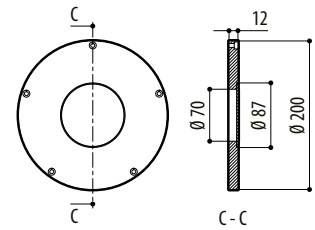
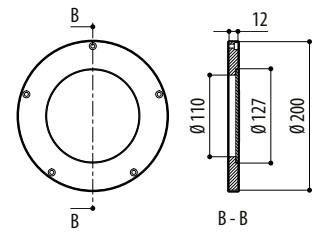
| Model Number | Housing sunshield | Power supply 230Vac | Ø germanium window |
|--------------|-------------------|---------------------|--------------------|
| NTL1K1000    | ✓                 | ✓                   | 55mm (2.1in)       |
| NTL1K1300    | ✓                 | ✓                   | 70mm (2.8in)       |
| NTL1K1500    | ✓                 | ✓                   | 110mm (4.3in)      |

## TECHNICAL DRAWINGS

The indicated measurements are expressed in millimetres.



### FRONT FLANGE



NTL