

NVX RANGE, ACCESSORIES



NVXTUB

DUST PROTECTION FRONTAL SHIELD

Made of electro-polished stainless steel AISI 316L



NVXTUB

NVXIRBKT

ILLUMINATOR FASTENING SUPPORT

Made of electro-polished stainless steel AISI 316L



NVXIRBKT

WASPT

5 OR 23 LITER TANK WITH PUMP

Delivery head: 5m (16ft), 11m (36ft), 30m (98ft)

Operating temperature: from -10°C (14°F) up to +60°C (140°F)

Available voltages: 230Vac, 120Vac, 24Vac

IP protection degree: IP66 (only products with 5m (16ft) or 11m (36ft) delivery head)

The WASPT0V23L11M00 washer pump with tank of 23l (6gal) and delivery head 11m (36ft) is certified "Lloyd's Register Marine Type Approval"



WASHERS AND TANKS

WASNX

WASHER PUMP WITH SOLENOID VALVE FOR STAINLESS STEEL PRODUCTS

Enclosure made of stainless steel AISI 316L

Delivery head: up to 20m (66ft)

Water tank capacity: 10l (2.6gal)

Operating temperature: from -20°C (-4°F) up to +60°C (140°F)

Available voltages: 230Vac, 120Vac, 24Vac

IP protection degree (EN60529): IP65 (solenoid valve only, enclosure not rated)



WASNX

TECHNICAL DATA

NVXTUB

MECHANICAL

Made of electro-polished stainless steel AISI 316L
Dimensions (ØxL): 175x121.5mm (6.9x4.8in)
Unit weight: 0.817kg (1.8lb)

PART NUMBER

NVXTUB Dust protection frontal shield

PACKAGE

Model Number	Weight	Dimensions (WxHxL)	Master carton
NVXTUB	1.2kg (2.6lb)	28.5x20x17cm (11.2x7.9x6.7in)	-

NVXIRBKT

MECHANICAL

Made of electro-polished stainless steel AISI 316L
Dimensions (HxL): 56.9x103.4mm (2.2x4in)
Unit weight: 0.138kg (3lb)

PART NUMBER

NVXIRBKT Illuminator fastening support (GEKO IRH)

PACKAGE

Model Number	Weight	Dimensions (WxHxL)	Master carton
NVXIRBKT	0.24kg (0.55lb)	9.5x13x19.5cm (3.7x5x7.7in)	-

WASPT

Washer pump, tank of 5l (1.3gal), 5m (16ft) delivery

Polyethylene tank, stainless steel cage
Dimensions (WxHxL): 217x272x257mm (8.5x10.7x10.1in)
Cable glands: 1xM20 + 3xM16
Unit weight: 3.8kg (8.4lb)
Water tank capacity: 5l (1.3gal)
Delivery head: 5m (16ft) max
Tube length: 5m (16ft)
Supply voltage/Current consumption:

- 230Vac, 0.3A, 50/60Hz
- 120Vac, 0.6A, 50/60Hz
- 24Vac, 1.8A, 50/60Hz

Operating temperature

- Maximum temperature: 60°C (140°F)
- Minimum temperature with antifreeze liquid in solution: -10°C (14°F)
- Minimum temperature with antifreeze liquid in solution (reduced performance and delivery height): -25°C (-13°F)

Electrical safety (CE): EN60950-1, EN62368-1

Electromagnetic compatibility (CE): EN50130-4, EN61000-6-3, EN55032 (Class B), FCC Part 15 (Class B)

Outdoor installation (CE): EN60950-22

IP protection degree (EN60529):

- IP66

EAC certification

Washer pump, tank of 23l (6gal), 5m (16ft) delivery

Polyethylene tank, stainless steel cage
Dimensions (WxHxL): 301x410x348mm (11.8x16.1x13.7in)
Cable glands: 1xM20 + 3xM16
Unit weight: 5.5kg (12.1lb)
Water tank capacity: 23l (6gal)
Delivery head: 5m (16ft) max
Tube length: 5m (16ft)
Supply voltage/Current consumption:

- 230Vac, 0.3A, 50/60Hz
- 120Vac, 0.6A, 50/60Hz
- 24Vac, 1.8A, 50/60Hz

Operating temperature

- Maximum temperature: 60°C (140°F)
- Minimum temperature with antifreeze liquid in solution: -10°C (14°F)
- Minimum temperature with antifreeze liquid in solution (reduced performance and delivery height): -25°C (-13°F)

Electrical safety (CE): EN60950-1, EN62368-1

Electromagnetic compatibility (CE): EN50130-4, EN61000-6-3, EN55032 (Class B), FCC Part 15 (Class B)

Outdoor installation (CE): EN60950-22

IP protection degree (EN60529):

- IP66

EAC certification

Washer pump, tank of 23l (6gal), 11m (36ft) delivery

Polyethylene tank, stainless steel cage
Dimensions (WxHxL): 301x410x348mm (11.8x16.1x13.7in)
Cable glands: 1xM20 + 3xM16
Unit weight: 6.7kg (14.8lb)
Switch for liquid level
Water tank capacity: 23l (6gal)
Delivery head: 11m (36ft) max
Tube length: 11m (36ft)
Supply voltage/Current consumption:

- 230Vac, 0.5A, 50/60Hz
- 120Vac, 1A, 50/60Hz
- 24Vac, 3.8A, 50/60Hz

Alarm outputs:

- Auto-powered: 1
- Dry contact: 1

Operating temperature

- Maximum temperature: 60°C (140°F)
- Minimum temperature with antifreeze liquid in solution: -10°C (14°F)
- Minimum temperature with antifreeze liquid in solution (reduced performance and delivery height): -25°C (-13°F)

Electrical safety (CE): EN60950-1, EN62368-1

Electromagnetic compatibility (CE): EN50130-4, EN61000-6-3, EN55032 (Class B), FCC Part 15 (Class B)

Outdoor installation (CE): EN60950-22

IP protection degree (EN60529):

- IP66

EAC certification

Marine Certification: Lloyd's Register Marine Type Approval (only for the 11m (36ft) version in the WASPT series)

Washer pump, tank of 23l (6gal), 30m (98ft) delivery

Polyethylene tank, stainless steel cage

Dimensions (WxHxL): 301x620x348mm (11.9x24.4x13.7in)

Cable glands: 1xM20 + 3xM16

Unit weight: 15.1kg (33.3lb)

Water tank capacity: 23l (6gal)

Delivery head: 30m (98ft) max

Tube length: 30m (98ft)

Switch for liquid level

Supply voltage/Current consumption:

- 230Vac, 2A, 50/60Hz
- 120Vac, 4.5A, 60Hz

Alarm outputs:

- Auto-powered: 1
- Dry contact: 1

Operating temperature

- Maximum temperature: 60°C (140°F)
- Minimum temperature with antifreeze liquid in solution: -10°C (14°F)

Electrical safety (CE): EN60950-1, EN62368-1

Electromagnetic compatibility (CE): EN50130-4, EN61000-6-3, EN55032, (Class B), FCC Part 15 (Class B)

IP protection degree (EN60529):

- IPX4

EAC certification

DTWRX

Board for remote control of wiper and washer pump with WASPT

2 functions: WIPER, WASHER

31 selectable addresses through DIP switch

Serial input RS-485

2 status LED: Stand-by and receiver control

Dimensions: 43x56x13mm (1.7x2.2x0.51in)

Unit weight: 0.02kg (0.04lb)

Power consumption: 0.5W

Half duplex RS-485 serial interface for keypad telemetry data reception (maximum distance 1200m/3937ft) and from SM matrix range (maximum distance 1200m/3937ft)

Protocols:

- PELCO D (2400, 9600 baud)
- VIDEOTEC MACRO (9600, 38400 baud)

Operating temperature: from -25°C up to +60°C

Electrical safety (CE): EN60950-1, EN62368-1

Electromagnetic compatibility (CE): EN50130-4, EN61000-6-3, FCC Part 15 (Class B)

EAC certification

PART NUMBER

WASPT0V5L5M00	Water tank 5l (1.3gal), pump with delivery up to 5m (16ft), IN 230Vac-24Vac-120Vac
WASPT0V23L5M00	Water tank 23l (6gal), pump with delivery up to 5m (16ft), IN 230Vac-24Vac-120Vac
WASPT0V23L11M00	Water tank 23l (6gal), pump with delivery up to 11m (36ft) with water floating, IN 230Vac-24Vac-120Vac
WASPT1V23L30M00	Water tank 23l (6gal), pump with delivery up to 30m (98ft) with water floating, IN 230Vac
WASPT3V23L30M00	Water tank 23l (6gal), pump with delivery up to 30m (98ft) with water floating, IN 120Vac

ACCESSORIES

DTWRX	Data receiver for remote control of the wiper and WASPT range pumps in stand-alone housings
-------	---

PACKAGE

Model Number	Weight	Dimensions (WxHxL)	Master carton
WASPT0V5L5M00	4.3kg (9.5lb)	31x31x22cm (12.2x12.2x8.6in)	-
WASPT0V23L5M00	6.4kg (14lb)	32x37.5x51cm (12.5x14.7x20in)	-
WASPT0V23L11M00	7.5kg (16.5lb)	32x37.5x51cm (12.5x14.7x20in)	-
WASPT1V23L30M00	15.4kg (34lb)	38x22x79cm (15x8.6x31in)	-

WASNX

MECHANICAL

Enclosure made of stainless steel AISI 316L

Delivery pipe supplied

- Length: 20m (66ft)

Pressure: 4bar max

Delivery head: 20m (66ft)

Material (delivery pipe): Antistatic plastic

Dimensions (WxHxL): 429x697x255mm (16.9x27.4x10in)

Unit weight: 18kg (40lb)

Water tank capacity: 10l (2.6gal)

ELECTRICAL

Supply voltage/Current consumption

- 230Vac, 0.07A, 50/60Hz
- 120Vac, 0.13A, 50/60Hz
- 24Vac, 0.7A, 50/60Hz

ENVIRONMENT

For installation indoors and outdoors

Operating temperature of solenoid valve: from -20°C (-4°F) up to +60°C (140°F)

Operating temperature of device: depending on the solidification temperature of the liquid

CERTIFICATIONS

Electrical safety (CE): EN60950-1, EN62368-1

Electromagnetic compatibility (CE): EN61000-6-2, EN61000-6-3

Outdoor installation (CE): EN60950-22

IP protection degree (EN60529):

- IP65 (solenoid valve only, enclosure not rated)

EAC certification

PART NUMBER

- WASN1V10L20M00 Tank 10l (2.6gal) with integrated manual pump controlled by solenoid valve, delivery head up to 20m (66ft) max, IN 230Vac
- WASN2V10L20M00 Tank 10l (2.6gal) with integrated manual pump controlled by solenoid valve, delivery head up to 20m (66ft) max, IN 24Vac
- WASN3V10L20M00 Tank 10l (2.6gal) with integrated manual pump controlled by solenoid valve, delivery head up to 20m (66ft) max, IN 120Vac

SPARE PARTS

- OWEXTANK Pump in stainless steel, 10l (2.6gal)
- OWEXTUB Water pipe, 20m (66ft)

BRACKETS AND ADAPTORS

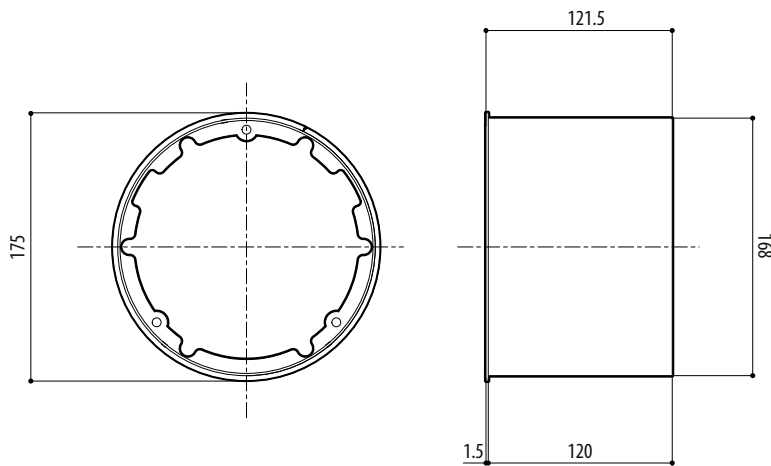
- NXCOL AISI 316L stainless steel pole adapter module
- NXCW AISI 316L stainless steel corner adapter module

PACKAGE

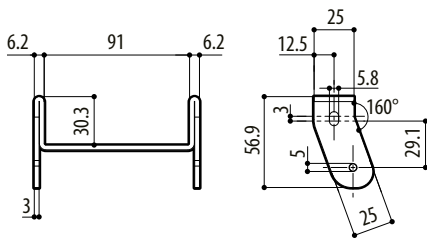
Model Number	Weight	Dimensions (WxHxL)	Master carton
WASN1V10L20M00	20.3kg (44.7lb)	30x74x46cm (11.8x29.1x18.1in)	-
WASN2V10L20M00	20.3kg (44.7lb)	30x74x46cm (11.8x29.1x18.1in)	-
WASN3V10L20M00	20.3kg (44.7lb)	30x74x46cm (11.8x29.1x18.1in)	-

TECHNICAL DRAWINGS

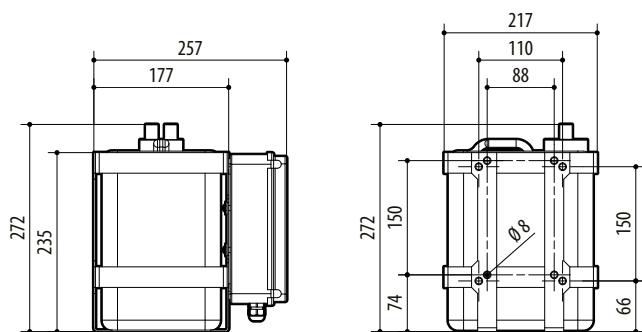
The indicated measurements are expressed in millimetres.



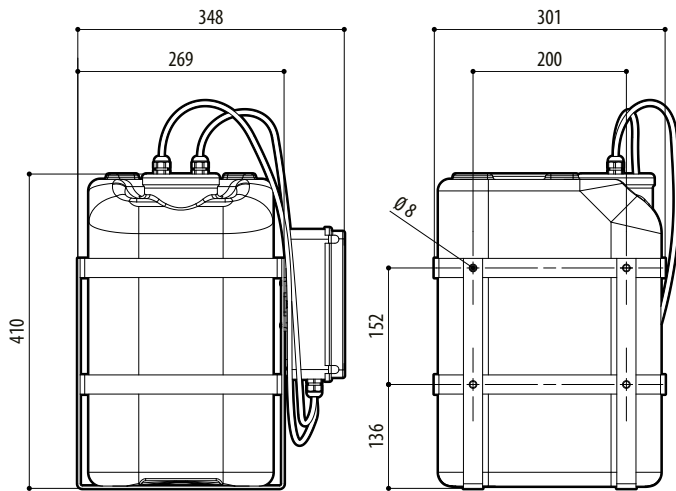
NVXTUB



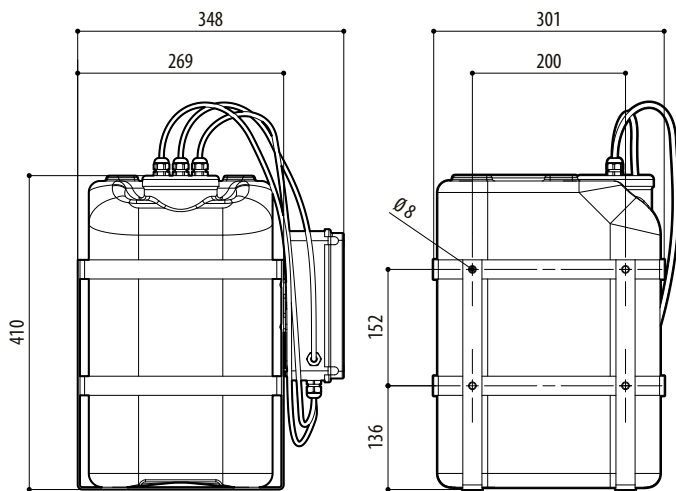
NVXIRBKT



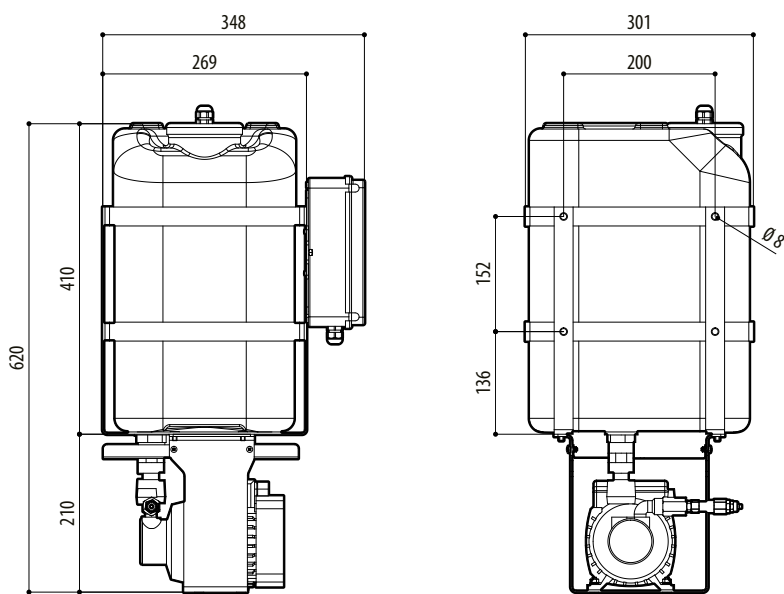
WATER TANK 5L (1.3GAL), 5M (16FT) DELIVERY



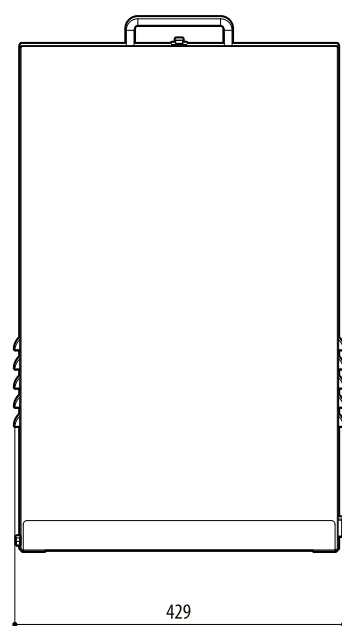
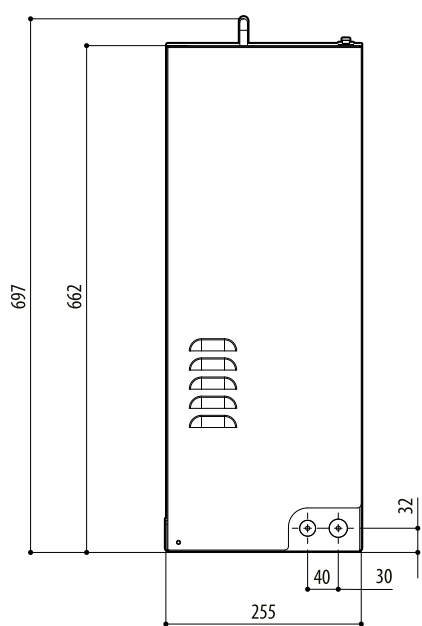
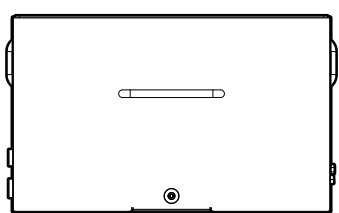
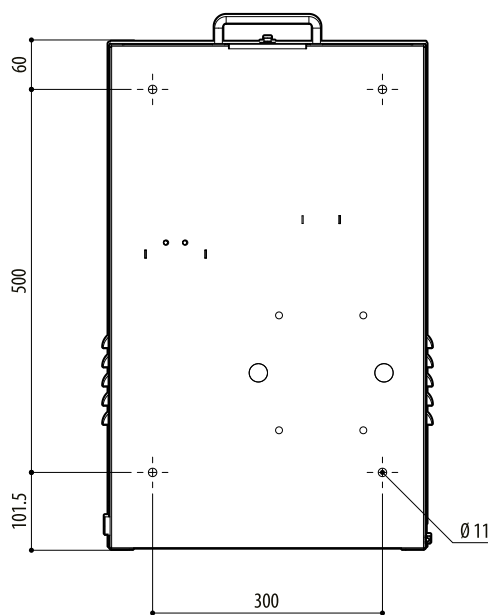
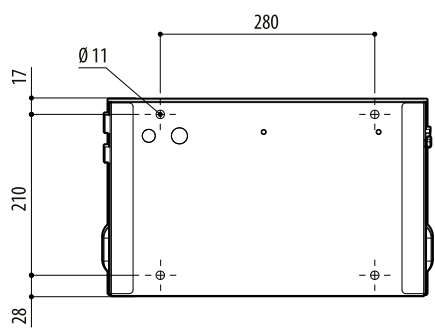
WATER TANK 23L (6GAL), 5M (16FT) DELIVERY



WATER TANK 23L (6GAL), 11M (36FT) DELIVERY



WATER TANK 23L (6GAL), 30M (98FT) DELIVERY



WASN