

DESCRIPTION

Counter-plate in stainless steel AISI 316L. For UEBP and UEBW (ULISSE EVO) and compatible with NVX, NTX cameras.

TECHNICAL DATA

MECHANICAL

Bracket for UEBW, UEBP (ULISSE EVO) and for NVX, NTX cameras
 AISI 316L stainless steel construction
 Dimensions: 200x200x25mm (7.9x7.9x0.98in)
 Unit weight: 1.38kg (3.04lb)

PART NUMBER

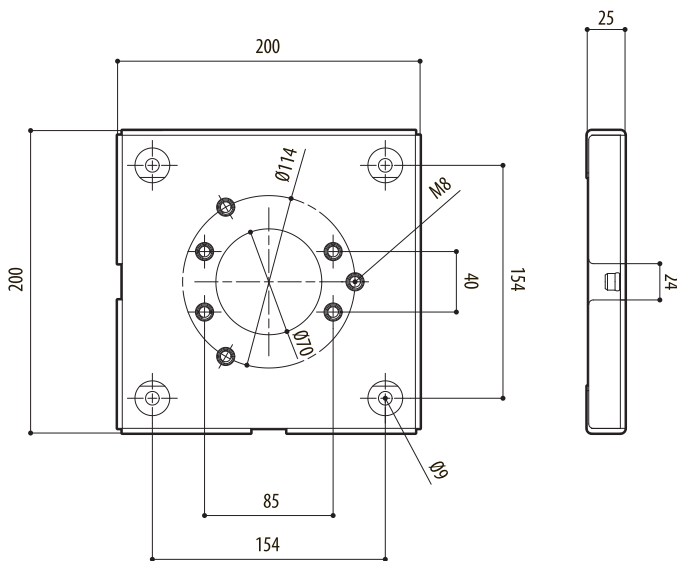
UEAW Counter-plate in stainless steel AISI 316L

PACKAGE

Model Number	Weight	Dimensions (WxHxL)	Master carton
UEAW	1.85kg (4lb)	33x27x7.5cm (13x10.6x3in)	-

TECHNICAL DRAWINGS

The indicated measurements are expressed in millimetres.



UEAW