

ULISSE PTZ CAMERAS AND UNITS, BRACKETS



UPTWBA

WALL MOUNT BRACKET

Made of die-cast aluminum

Epoxy polyester powder painting, RAL9002 colour

Wall bracket with internal cable channel

To combine with PTCC1 pole mount or WCWGC corner mount adapters for the installation on several surfaces



UPTWBA

UPTWBTAB

PARAPET BRACKET

Made of die-cast aluminum

Epoxy polyester powder painting, RAL9002 colour

Internal cable management



UPTWBTAB

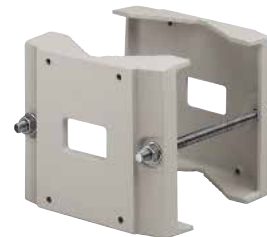
PTCC1

POLE MOUNT ADAPTOR

Made of aluminium

For pole diameters: from 80mm (3.1in) up to 150mm (5.9in)

Load rating: 50kg (110lb)



PTCC1

WCWGC

CORNER MOUNT ADAPTOR

Made of steel

Load rating: 50kg (110lb)



WCWGC

TECHNICAL DATA

UPTWBA

MECHANICAL

Made of die-cast aluminum

Epoxy polyester powder painting, RAL9002 colour

Wall bracket with internal cable channel

To combine with PTCC1 pole mount or WCWGC corner mount adapters for the installation on several surfaces

Unit weight: 3.1kg (6.6lb)

PART NUMBER

UPTWBA Wall bracket with internal cable channel

PACKAGE

Model Number	Weight	Dimensions (WxHxL)	Master carton
--------------	--------	--------------------	---------------

UPTWBA	3.5kg (7.7lb)	19x16x60cm (7.5x6.3x23.6in)	-
--------	---------------	-----------------------------	---

UPTWBTAB

MECHANICAL

Made of die-cast aluminum

Epoxy polyester powder painting, RAL9002 colour

Internal cable management

Unit weight: 1.6kg (3.5lb)

PART NUMBER

UPTWBTAB Parapet bracket with internal cable channel

PACKAGE

Model Number	Weight	Dimensions (WxHxL)	Master carton
--------------	--------	--------------------	---------------

UPTWBTA	1.6kg (3.5lb)	19x19x19cm (7.5x7.5x7.5in)	12
---------	---------------	----------------------------	----

PTCC1

MECHANICAL

Made of aluminium

For pole diameters: 80÷150mm (3÷5.9in)

Load rating: 50kg (110lb)

Unit weight: 2.6kg (5.7lb)

PART NUMBER

PTCC1 Pole mount adaptor

PACKAGE

Model Number	Weight	Dimensions (WxHxL)	Master carton
--------------	--------	--------------------	---------------

PTCC1	2.8kg (6.2lb)	14x25.5x20cm (5.5x10x7.9in)	8
-------	---------------	-----------------------------	---

WCWGC

MECHANICAL

Made of steel

Load rating: 50kg (110lb)

Unit weight: 2.2kg (4.8lb)

PART NUMBER

WCWGC Corner mount adaptor

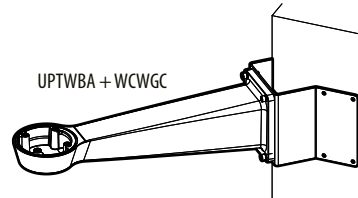
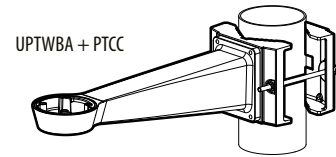
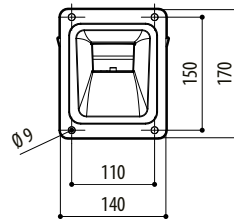
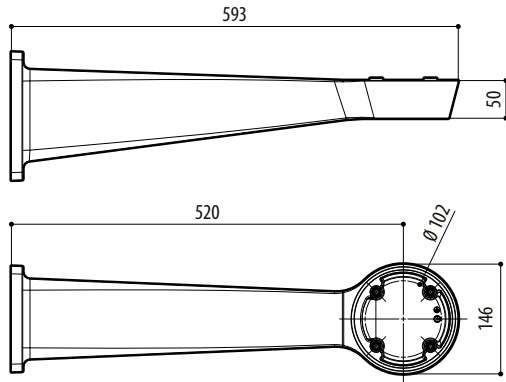
PACKAGE

Model Number	Weight	Dimensions (WxHxL)	Master carton
--------------	--------	--------------------	---------------

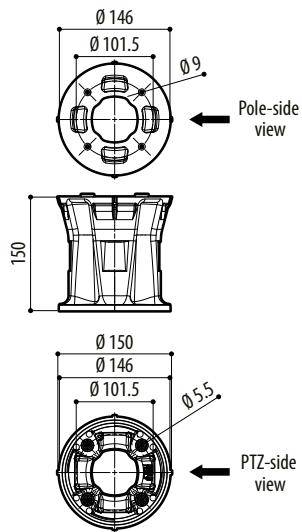
WCWGC	2.6kg (5.7lb)	24x32x24.5cm (9.4x12.6x9.6in)	8
-------	---------------	-------------------------------	---

TECHNICAL DRAWINGS

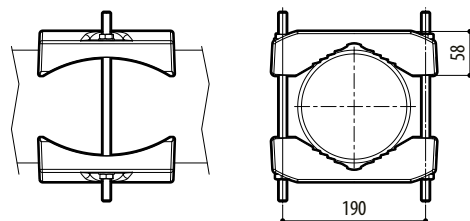
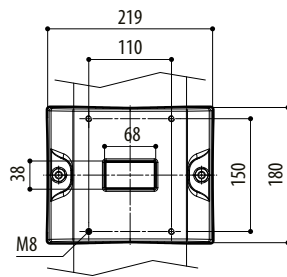
The indicated measurements are expressed in millimetres.



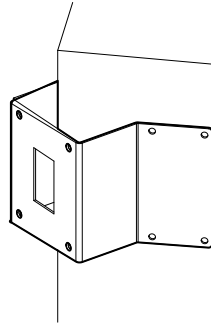
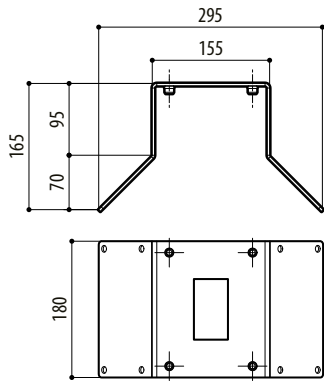
UPTWBA



UPTWBTAB



PTCC1



WCWGC