



DESCRIPTION

Die-cast aluminium reinforcing support plate, suitable for WBJA, WBMA, WBOVA2 and PTAC mounts. Allows the internal cable management. Epoxypolyester powder painted.

TECHNICAL DATA

MECHANICAL

Made of aluminium

Available with a supporting box with internal cable channel (WBOV3A2)

Load rating: 50kg (110lb)

Unit weight: 0.6kg (1.3lb)

PART NUMBER

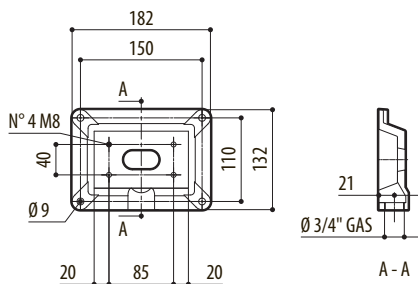
WCPA Reinforcing support plate for poor consistency walls

PACKAGE

Model Number	Weight	Dimensions (WxHxL)	Master carton
WCPA	0.7kg (1,5lb)	10x16x23cm (4x6x9in)	30

TECHNICAL DRAWINGS

The indicated measurements are expressed in millimetres.



WCPA