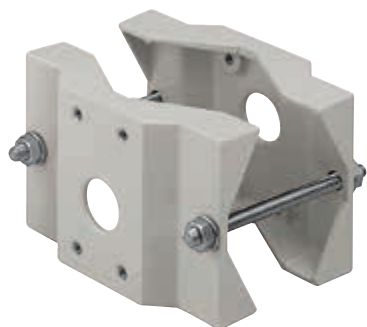


WSFPA

POLE MOUNT ADAPTOR



DESCRIPTION

Pole mount suitable for WBJA, WBMA, WBOVA2 and PTAC brackets. Allows the internal cable management. Epoxy polyester powder painted.

TECHNICAL DATA

MECHANICAL

Made of aluminium

Allows the internal cable management

Load rating: 30kg (66lb)

For pole diameters: from 65mm (2.6in) up to 140mm (5.5in)

Unit weight: 0.9kg (2lb)

PART NUMBER

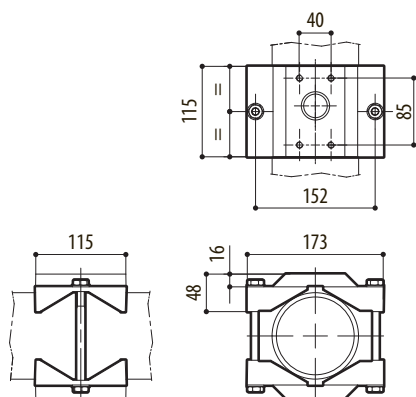
WSFPA Pole mount adaptor

PACKAGE

Model Number	Weight	Dimensions (WxHxL)	Master carton
WSFPA	1kg (2.2lb)	10x16x23cm (4x6x9in)	15

TECHNICAL DRAWINGS

The indicated measurements are expressed in millimetres.



WSFPA